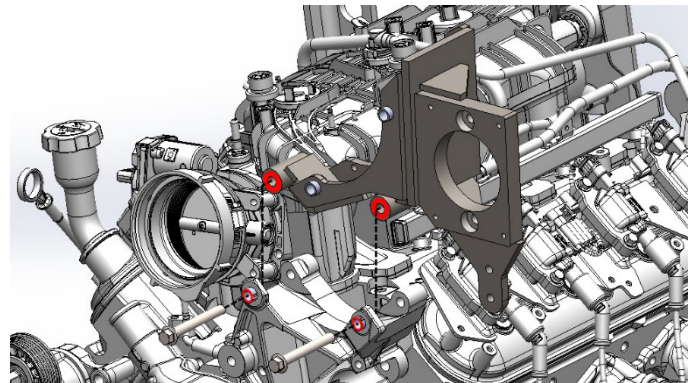
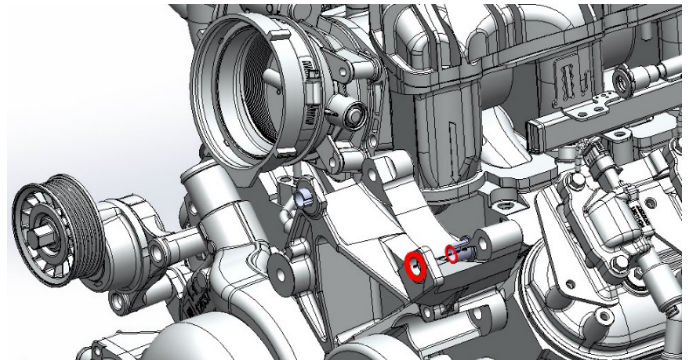


INSTALLATION NOTES

1. The buyer is responsible for providing trained and experienced installation decision making with technical know-how to apply professional judgment that specifically applies to each individual installation.
2. Be sure to read and understand all available information including but not limited to instructions, warnings, sales terms, and warranties for the vehicle and all system components prior to attempting installation.
3. Disconnect negative battery cable. Disconnect alternator wiring. Remove factory alternator. Replace the split bushing on the driver's side of factory alternator mount with the shortened split bushing (4) that is supplied.
4. Install mounting bracket (1) in the factory-alternator mount using the shortened head bolt (3) supplied in the same location where the shortened split bushing (4) was installed and using the OEM alternator bolt (5) and OEM alternator bushing (6) in other location.

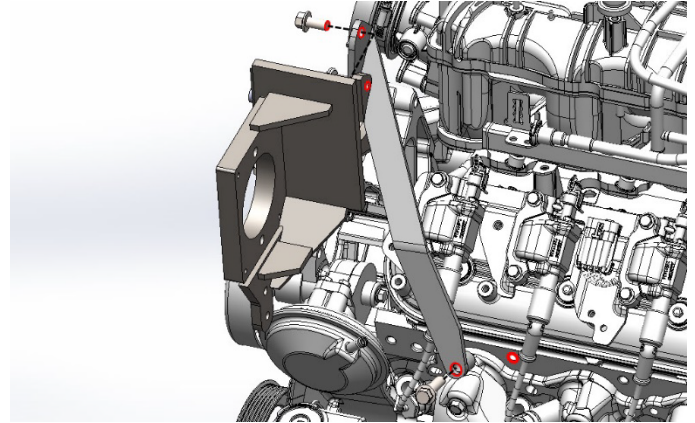


SMK38A-I6

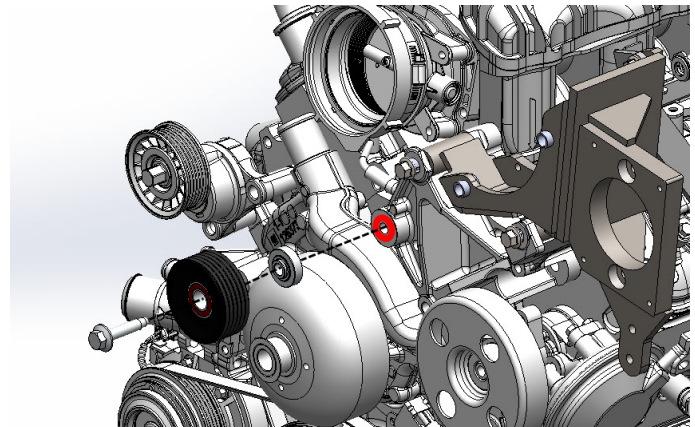
2003-2020 Isuzu NPR / NPR-HD
2003-2009 Chevrolet/GMC W3500-W5500
2016-2020 Chevrolet LCF 3500-5500
2022-2023 Isuzu NQR / NRR
6.0L V8 Gas w/-w/o A/C

Requires 6 Groove Clutch, SAE Two Bolt 'A' Flange Pump
Recommended 1.75 in.³ or 8 gal. Pump w/ 12hp Restriction

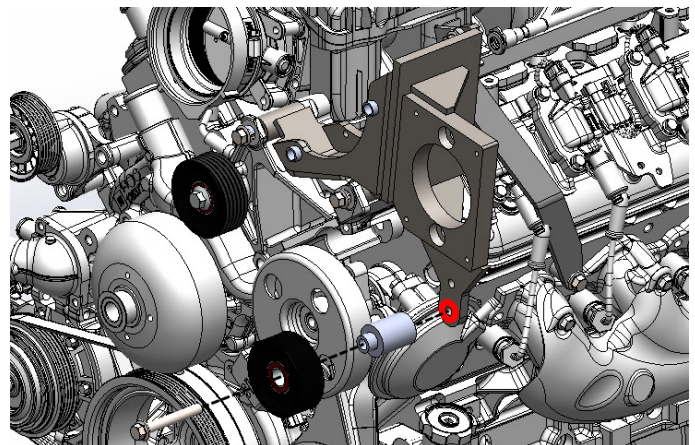
5. Install the brace (2) supplied in the kit by mounting the end with the spacer to the cylinder head directly behind the front exhaust port with bolt (10) and the other end to the mounting bracket with bolt (9).



6. Remove the factory flat idler and replace it with the grooved idler (14) supplied in the kit. Reuse the OEM idler mounting hardware.



7. Add smooth idler (11) to mounting bracket with hardware (12,13).

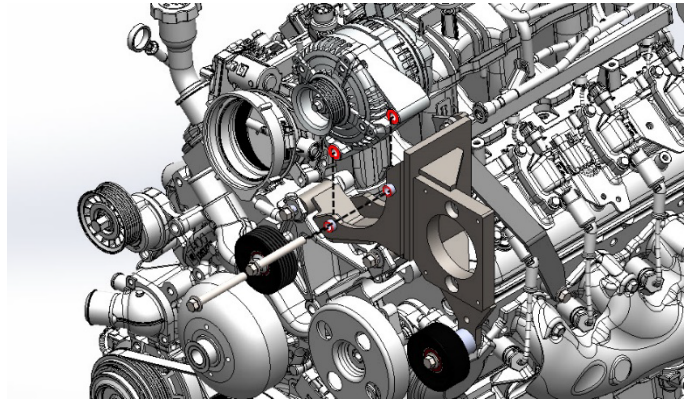


SMK38A-I6

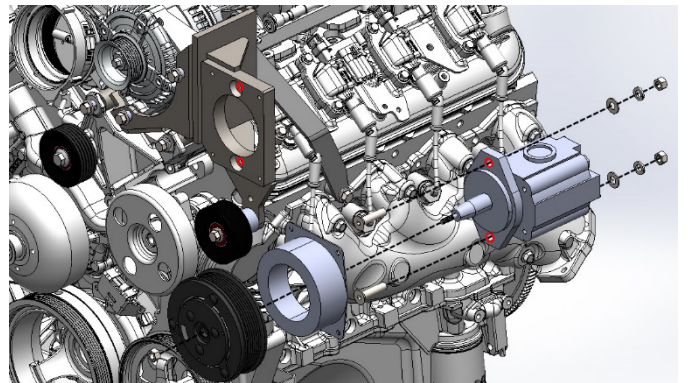
2003-2020 Isuzu NPR / NPR-HD
 2003-2009 Chevrolet/GMC W3500-W5500
 2016-2020 Chevrolet LCF 3500-5500
 2022-2023 Isuzu NQR / NRR
 6.0L V8 Gas w/-w/o A/C

Requires 6 Groove Clutch, SAE Two Bolt 'A' Flange Pump
 Recommended 1.75 in.³ or 8 gal. Pump w/ 12hp Restriction

- Install the factory alternator to the mounting bracket using the hardware (7,8) provided in the kit. Reinstall the alternator wiring.



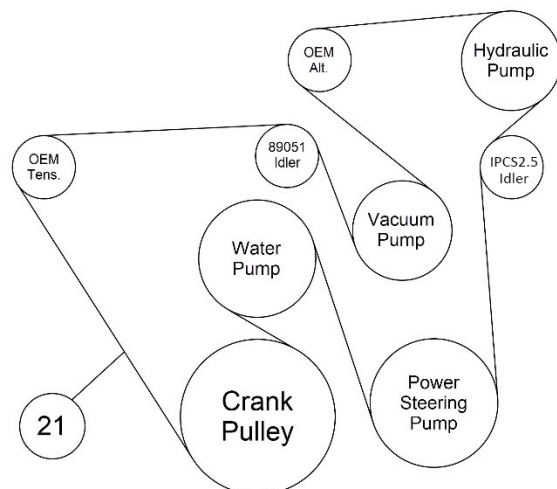
- Install the hydraulic clutch-pump assembly with pump mounting hardware (17-20).



- Replace the rubber hose from the inlet of the vacuum pump with the new hose (15) using the hose clamps (16) provided.

- Install the belt (21) as shown in illustration. As well as, reconnect negative battery cable.

NOTE: Make certain any hoses, wires or components that were relocated during installation are securely fastened and do not come in contact with any hot or moving parts.



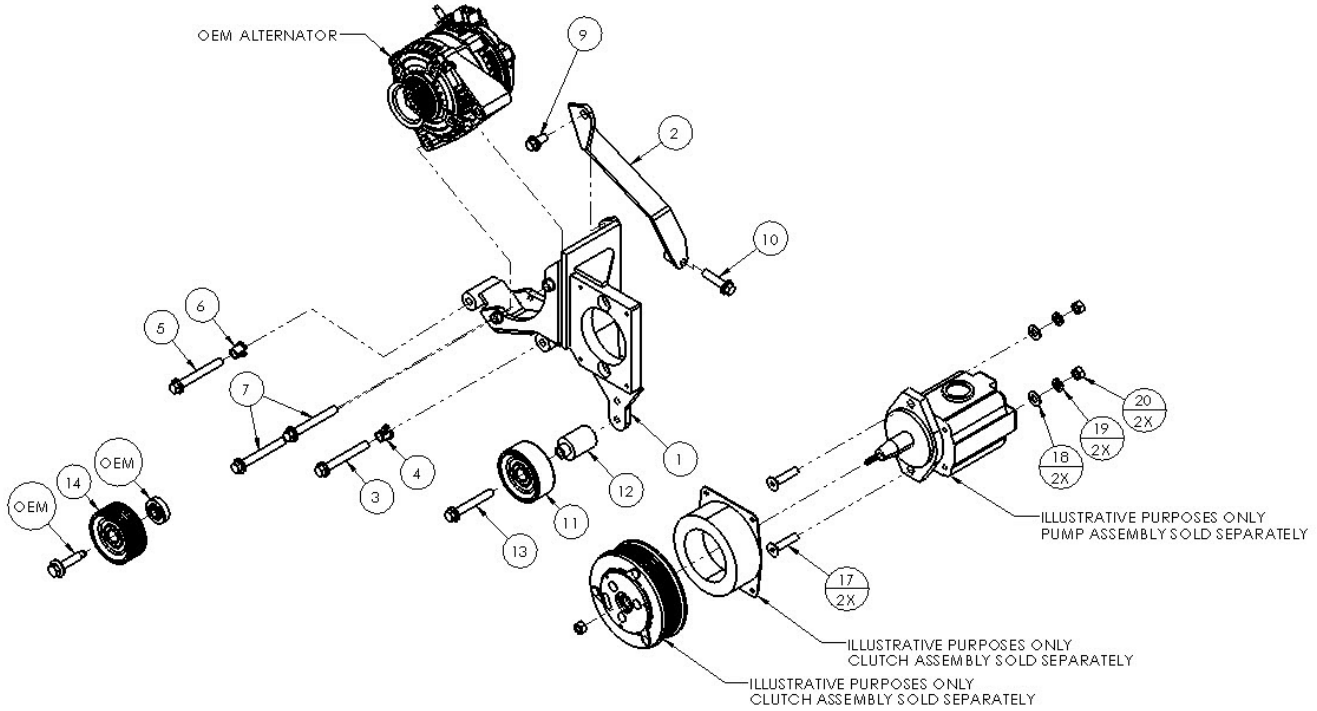


CW Mill Equipment Co., Inc.
 14 Commerce Drive Sabetha, KS 66534
 Phone: (785) 284-3454
 Fax: (785) 284-3601
 Email: brackets@cwmill.com
 Website: www.cwkits.com

SMK38A-I6

2003-2020 Isuzu NPR / NPR-HD
 2003-2009 Chevrolet/GMC W3500-W5500
 2016-2020 Chevrolet LCF3500-5500
 2022-2023 Isuzu NQR / NRR
 6.0L V8 Gas w/-w/o A/C

Requires 6 Groove Clutch, SAE Two Bolt 'A' Flange Pump
 Recommended 1.75 in.³ or 8 gal. Pump w/ 12hp Restriction



| PARTS LIST | | | | | |
|---------------------------------------|-------------------------------------|------|--|-------------------------|------|
| Item | Description | Qty. | Item | Description | Qty. |
| Main Brackets | | | 12 | SMB382 (Idler Bushing) | 1 |
| 1 | SMP38A | 1 | 13 | 10mm x 70mm Flange Bolt | 1 |
| Brace | | | Grooved Idler | | |
| 2 | SMB381 | 1 | 14 | 89051 | 1 |
| Main Bracket Mounting Hardware | | | Vacuum Hose Kit (Not Shown) | | |
| 3 | 10mm x 80mm Bolt w/ Short Head | 1 | 15 | 11/32" Vacuum Hose | 12" |
| 4 | 1255-0090 Split Bushing Shortened | 1 | 16 | #6 Hose Clamp | 2 |
| 5 | OEM Alternator Bolt | 1 | Pump Assembly Mounting Hardware | | |
| 6 | OEM Split Bushing | 1 | 17 | 3/8 x 1 1/2" Bolt | 2 |
| 7 | 10mm x 80mm Flange Bolt | 2 | 18 | 3/8" Flat Washer | 2 |
| 8 | 1255-0090 Split Bushing (Installed) | 2 | 19 | 3/8" Lock Washer | 2 |
| Brace Mounting Hardware | | | 20 | 3/8" Nut | 2 |
| 9 | 10mm x 20mm Flange Bolt | 1 | Belt | | |
| 10 | 10mm x 40mm Flange Bolt | 1 | 21 | 5061254 Dayco | 1 |
| Smooth Idler Assembly | | | | | |
| 11 | IPCS2.5 | 1 | | | |

Disclaimer: (1.) Due to the custom nature and variation of all add-on systems of this type, no complete system kits are offered by the manufacturer, and any group of parts marketed as a kit is limited to only the individually defined parts in that specific kit. The system designer's rotating accessory components are not included, offered, or fully known by the manufacturer. In addition to the absence of the rotating accessory system, other potential components such as additional clamps, brackets, wear liners, hardware, or other items that may be required by the system designer must be identified and supplied by the actual system designer. (2.) Due to vehicle manufacturer's assembly tolerances, production changes, and installation variances, it is the buyer's responsibility to ensure adequate clearance for all components including space for and safe location of the fan, radiator, all lines, and wires. Check for possible movement, vibration, friction points, heat exposure and/or shifting of any and all components such as hoses, wires, and all other components including those that may otherwise be considered non-moving and/or unaffected by the installation (3.) The buyer is responsible for the entire installation of a mounting kit as the mounting kit is part of a custom process controlled by the buyer through their whole system design and directed installer as the installer evaluates, locates, routes, aligns, and tightens all components while determining if additional clamps, brackets, wear-liners, or other components may be required, beyond those included in the kit. Any additional items required, beyond those included in the kit, are to be provided at the expense of the buyer. (4.) The buyer is responsible for the development and communication of their whole system installation procedures, safety precautions, application, and use of the engine accessory mounting kit in their system, including efforts to maintain vehicle control and prevent pinch, wear, impact, and/or burn exposure on all hoses, wires, and other parts. (5.) The buyer is responsible for providing trained and experienced installation decision making with technical know-how to apply professional judgment that specifically applies to each individual installation. The buyers chosen installers must be qualified and experienced technicians that are familiar with the vehicle and accessory being mounted as well as the buyer's whole system design and installation procedures associated with the kit. (6.) The buyer is responsible for determining and achieving compliance to all regulatory issues that apply to the use of all products. (7.) The manufacturer reserves the right to make changes and/or improvements to any product at any time with or without notice.