



VFLMK26SD508-6

2021-2022 Freightliner/Mercedes-Benz Sprinter 2500-4500
2.0L 14 Diesel w/-w/o A/C, w/o Mercedes-Benz N62 or N63 Options

Requires 6 or 8-Groove, 119mm Diameter Clutch
For use w/ TM13, TM15 or TM16 Ear Mount Compressor
128% Overdrive Ratio w/ 119mm Diameter Clutch

**Wrenches are available and suggested for removal and retorquing the harmonic balancer bolts. PART# VFL26WR-1 & VFL26WR-2.
These are sold separately.**

INSTALLATION NOTES

1. The buyer is responsible for providing trained and experienced installation decision making with technical know-how to apply professional judgment that specifically applies to each individual installation.
2. Be sure to read and understand all available information including but not limited to instructions, warnings, sale terms, and warranties for the vehicle and all system components prior to attempting installation.
3. Disconnect the negative battery cable. Battery is located in the floor behind the driver's seat. Remove the grill and front bumper cover from the vehicle. Remove electric fans to gain access to the charge air cooler bolts. Disconnect the two charge air tubes from the charge air cooler and remove the cowl from the charge air cooler. Remove it from the vehicle.
4. Rotate the tensioner to release tension on the belt and remove the belt. A four-millimeter (4mm) pin can be installed in the tensioner arm to hold it open. Remove the OEM belt from the engine (retain as it will be reused).
5. If your vehicle is equipped without Mercedes-Benz N62 or N63 style of OEM damper pulley follow instructions 5a (see image(s) below). If your vehicle is equipped with Mercedes-Benz N62 or N63 style of OEM damper pulley follow instructions 5b (see image(s) below):
 - a. Remove the four bolts holding the pulley to the crankshaft (can use VFL26WR-1). Install drive pulley (1) with bolts (3) onto the front of the OEM damper pulley (can use VFL26WR-2). **Make certain the alignment bushings in the damper pulley are inserted properly into the front of the crankshaft.** Do not use drive pulley adaptor (2). Tighten pulley bolts (3) in the following steps:
 - i. Step 1: 10ft/lbs.
 - ii. Step 2: 35ft/lbs.
 - iii. Step 3: 60ft/lbs.
 - iv. Step 4: 90ft/lbs.
 - b. Remove the four bolts holding the OEM auxiliary accessory component drive pulley and the OEM damper pulley to the crankshaft. Remove the two outside guide pins from the OEM damper pulley (should easily pull out of the OEM damper pulley). Install the add-on drive pulley (1) with the drive pulley adaptor (2) as shown in the parts list onto the front of the OEM damper pulley with bolts (3) (can use VFL26WR-2). Make sure the add-on drive pulley (1) and the drive pulley adaptor (2) are seated properly onto the pilot of the OEM damper pulley. **Make certain the alignment bushings in the damper pulley are inserted properly into the front of the crankshaft.** Tighten pulley bolts (3) in the following steps:
 - i. Step 1: 10ft/lbs.
 - ii. Step 2: 35ft/lbs.
 - iii. Step 3: 60ft/lbs.
 - iv. Step 4: 90ft/lbs.
6. Using the 3/8"-16 tap (13) supplied with the kit, tap the hole out [C] (idler bushing (17) can be used as a guide to help start the tap straight).



VFLMK26SD508-6

2021-2022 Freightliner/Mercedes-Benz Sprinter 2500-4500
2.0L 14 Diesel w/-w/o A/C, w/o Mercedes-Benz N62 or N63 Options

Requires 6 or 8-Groove, 119mm Diameter Clutch
For use w/ TM13, TM15 or TM16 Ear Mount Compressor
128% Overdrive Ratio w/ 119mm Diameter Clutch

**Wrenches are available and suggested for removal and retorquing the harmonic balancer bolts. PART# VFL26WR-1 & VFL26WR-2.
These are sold separately.**

INSTALLATION NOTES (CONTINUED)

7. Remove the two lower OEM alternator bolts. Install bracket (4) onto the oil pan with bolts (7) at location [B], bolts (8) with brace (6) at location [A], and the two lower OEM alternator hole locations (do not tighten bolts at this time). Install FEAD brace (9) onto the engine with mounting hardware (11-12) at location [C] and bolts (10) to the front of bracket (4). With all the bolts installed, lightly tighten the bolts in this order: First, tighten bolt (11). Then, tighten bolts (10). Finally, tighten bolts (7), bolts (8), and the two lower OEM alternator bolts. Now torque bolts (7, 8, and 11) to 24ft/lbs., and torque bolt (10) to 30ft/lbs.
8. Reinstall the OEM belt back to its original routing.
9. Install the smooth idler pulley assembly (16-19) onto the front of brace (9) as shown in the illustration. Install tensioner (14) with bolt (15). Install the auxiliary A/C compressor with mounting hardware (20-22). Install the auxiliary A/C compressor belt (23) as shown in the illustration.
10. Reinstall the charge air cooler and cowl with original bolts. Connect the two charge air hoses. Replace the front grill and bumper cover with original hardware. Make certain all sensors and lights are reconnected properly. Reconnect the negative battery cable.

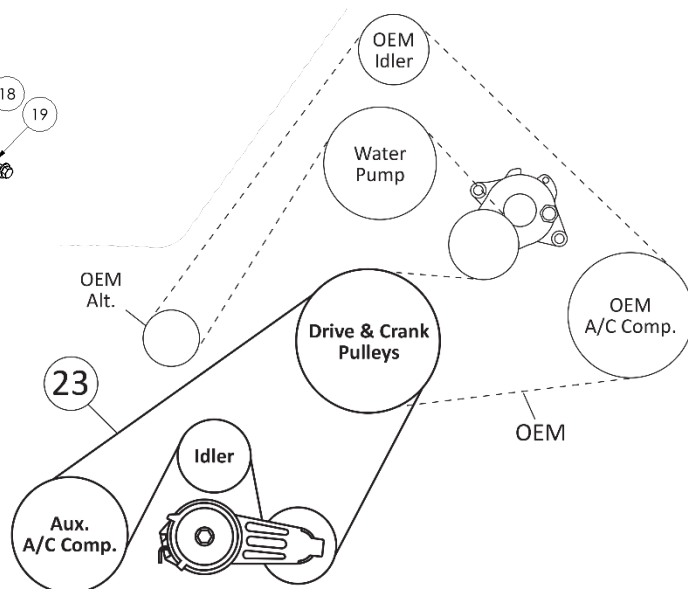
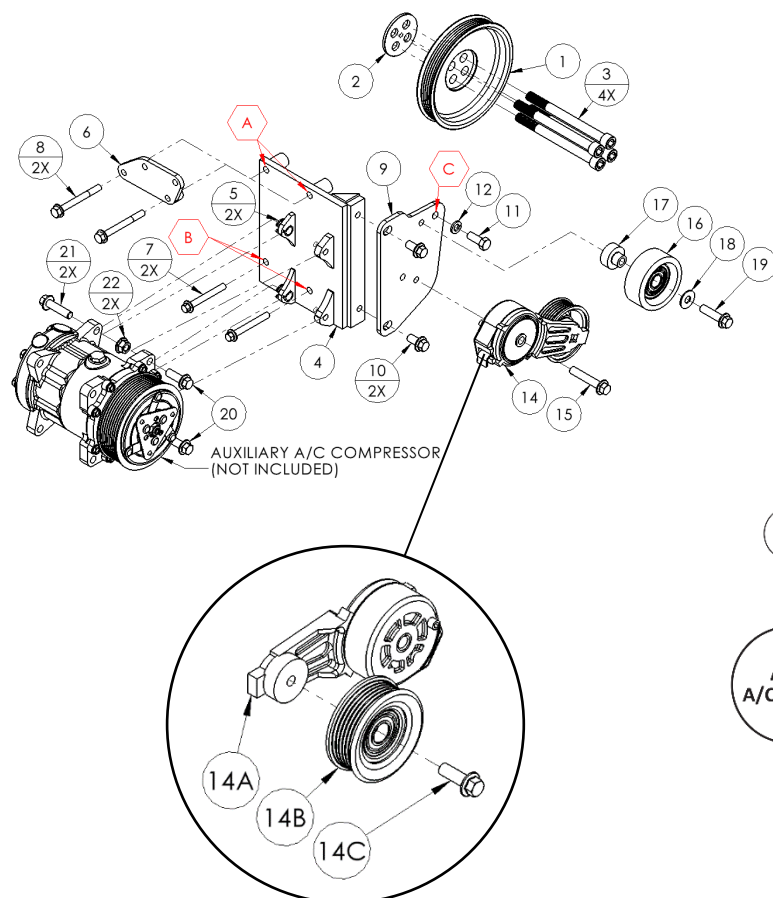
CAUTION: Before starting the engine, check to make certain no wires, hoses, etc. that may have been disturbed during installation do not come in contact with any hot or moving parts. Properly refill any fluids that may have been drained. Check for leaks. Run the engine and check for proper belt tracking and clearance of any hoses, wires, etc. It is the installer's responsibility to correct/adjust any components, if necessary, before the vehicle is put into service.

VFLMK26SD508-6

2021-2022 Freightliner/Mercedes-Benz Sprinter 2500-4500
 2.0L 14 Diesel w/-w/o A/C, w/o Mercedes-Benz N62 or N63 Options

Requires 6 or 8-Groove, 119mm Diameter Clutch
 For use w/ TM13, TM15 or TM16 Ear Mount Compressor
 128% Overdrive Ratio w/ 119mm Diameter Clutch

Parts List



PARTS LIST							
Item	Part Number	Description	Qty.	Item	Part Number	Description	Qty.
Add-on Drive Pulley				Tensioner Assembly			
1	VFLPC266-6	Add-on Drive Pulley (6.0" Diameter)	1	14	89203-051	Custom Assembled Tensioner	1
Add-on Drive Pulley Adaptor (Vehicle Application Specific)				14a	89203	Dayco Tensioner Arm	1
2	VFLPA26	Add-on Drive Pulley Adaptor	1	14b	89051	Dayco 6-Groove Idler Pulley	1
Add-on Drive Pulley Mounting Hardware				14c	N/A	OEM Dayco 89203 Idler Pulley Bolt	1
3	1022525	M12-1.5 x 140mm 12.9Gr P/T SHCS	4	15	1018225	M10-1.5 x 55mm 10.9Gr Hex Flg. Bolt	1
Auxiliary A/C Compressor Mounting Bracket				Smooth Idler Pulley Assembly			
4	VFLMP26SD508-6	Auxiliary A/C Compressor Mounting Bracket	1	16	89007	Dayco Smooth Idler Pulley	1
5	1011888A	M14 Slide Bushing (Installed)	2	17	VDMB306	Machined Idler Bushing (1-1/4" Diameter)	1
Auxiliary A/C Compressor Mounting Bracket Support Brace				18	1007644	3/8" USS Flat Washer	1
6	VFLMB241	Support Brace (Attaches to OEM Alternator)	1	19	1006933	M10-1.5 x 40mm 10.9Gr Hex Flg. Bolt	1
Auxiliary A/C Compressor Mounting Bracket Mounting Hardware				Auxiliary A/C Compressor Mounting Hardware			
7	1022522	M8-1.25 x 65mm 10.9Gr Hex Flg. Bolt	2	20	1006927	M10-1.5 x 30mm 10.9Gr Hex Flg. Bolt	2
8	1022529	M8-1.25 x 75mm 10.9Gr Hex Flg. Bolt	2	21	1006933	M10-1.5 x 40mm 10.9Gr Hex Flg. Bolt	2
Auxiliary A/C Compressor FEAD Brace				22	1018204	M10-1.5 10.9Gr Hex Flg. Nut	2
9	VFLMB261	Auxiliary A/C Compressor FEAD Brace	1	Belt (Only One Belt is Supplied)			
Auxiliary A/C Compressor FEAD Brace Mounting Hardware				23	5060575	Dayco 6-Groove 57.5" Belt	1
10	1008390	M10-1.5 x 20mm 10.9Gr Hex Flg. Bolt	2		K060575	Gates 6-Groove 57.5" Belt	1
11	1005274	3/8"-16 x 1" NC Gr5 Hex Bolt	1		6PK1460	Bando 6-Groove 1460mm Belt	1
12	1010315	3/8" MED Lock Washer	1				
13	1011737A	3/8"-16 NC Tap (Not Shown)	1				

VFLMK26SD508-6

2021-2022 Freightliner/Mercedes-Benz Sprinter 2500-4500
2.0L 14 Diesel w/-w/o A/C, w/o Mercedes-Benz N62 or N63 Options

Requires 6 or 8-Groove, 119mm Diameter Clutch
For use w/ TM13, TM15 or TM16 Ear Mount Compressor
128% Overdrive Ratio w/ 119mm Diameter Clutch

OEM Crank Pulley Applications



Without Mercedes-Benz N62 or
N63 OEM Crank Pulley

VFLMK26SD508-6

2021-2022 Freightliner/Mercedes-Benz Sprinter 2500-4500
2.0L 14 Diesel w/-w/o A/C, w/o Mercedes-Benz N62 or N63 Options

Requires 6 or 8-Groove, 119mm Diameter Clutch
For use w/ TM13, TM15 or TM16 Ear Mount Compressor
128% Overdrive Ratio w/ 119mm Diameter Clutch

OEM Crank Pulley Applications



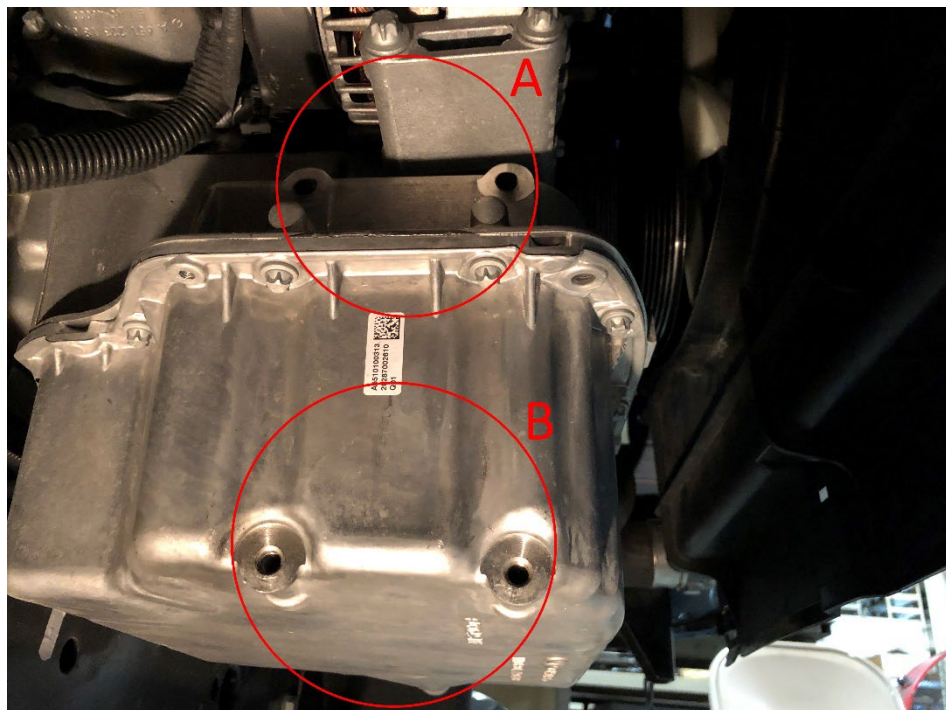
With Mercedes-Benz N62 or N63
OEM Crank Pulley

VFLMK26SD508-6

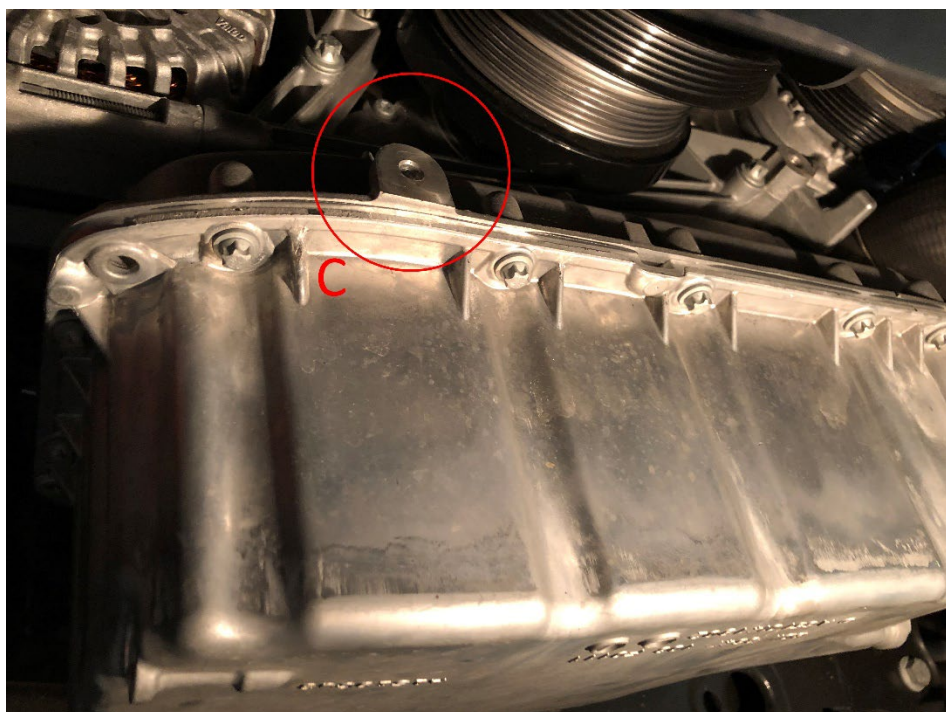
2021-2022 Freightliner/Mercedes-Benz Sprinter 2500-4500
2.0L 14 Diesel w/-w/o A/C, w/o Mercedes-Benz N62 or N63 Options

Requires 6 or 8-Groove, 119mm Diameter Clutch
For use w/ TM13, TM15 or TM16 Ear Mount Compressor
128% Overdrive Ratio w/ 119mm Diameter Clutch

Mounting Locations



Mounting Locations [A,B]



Mounting Location [C]



**2021-2022 Freightliner/Mercedes-Benz Sprinter 2500-4500
2.0L I4 Diesel w/-w/o A/C, w/o Mercedes-Benz N62 or N63 Options**

Requires 6 or 8-Groove, 119mm Diameter Clutch
For use w/ TM13, TM15 or TM16 Ear Mount Compressor
128% Overdrive Ratio w/ 119mm Diameter Clutch

[illegible]

11/29/2022