

For use w/ Rear-Ported SAE Two-Bolt 'A' Flange Pump, 8-Groove Clutch  
Recommended 1.75in<sup>3</sup> or 8 gal. Pump w/ 12hp Restriction or Smaller  
Approximately 160% Overdriven w/ 5-1/2" Diameter Clutch

## INSTALLATION NOTES

---

1. The buyer is responsible for providing trained and experienced installation decision making with technical know-how to apply professional judgment that specifically applies to each individual installation.
2. Be sure to read and understand all available information including but not limited to instructions, warnings, sale terms, and warranties for the vehicle and all system components prior to attempting installation.
3. Disconnect the negative battery cable(s). On the driver's side of the engine, cut the three zip ties holding a heater hose to the charge air tube. Loosen the clamps and remove the charge air tube from the engine.
4. Remove the air filter/fan ring support brackets from the engine compartment. They will not be reused.
5. Remove the OEM 10-groove serpentine belt.
6. Install main bracket (1) onto the engine at mounting locations [A] using mounting hardware (2) as shown. Do not tighten at this time.
7. Remove the OEM idler located just under the OEM A/C compressor. Remove the idler bushing and replace it with idler bushing (15). Reusing OEM idler and bolt, install idler mounting bracket (12) onto the engine at mounting location [C] as shown in illustration. Do not tighten at this time. Connect idler mounting bracket (12) to main bracket (1) with mounting hardware (13). Do not tighten at this time.
8. With all bolts in place and finger tight, the tightening sequence must be followed to assure proper belt alignment:
  - a. First, tighten the OEM idler bolt that holds the idler mounting bracket (12) to the engine. Tighten bolt to 48-52 ft/lbs.
  - b. Second, tighten bolts (13) to 48-52 ft/lbs.
  - c. Third, tighten bolts (2) to 48-52 ft/lbs.
9. Install smooth idler assembly (14-17) onto idler mounting bracket (12) in the upper, tapped hole on the bracket. Torque smooth idler assembly bolt (16) to 35-40 ft/lbs.
10. Install the aftermarket clutch pump assemblies according to the manufacturer's specifications with mounting hardware (19-22) provided onto the main bracket (1).
11. Install the air cleaner support bracket (3) onto the air cleaner box using hardware (4-6). Attach the air cleaner support bracket (3) to main bracket (1) using bolts (4) at mounting location [B]. Lift up on the air cleaner box when tightening the bolts to gain adequate clearance to the aftermarket clutch pump assemblies.
12. Install the fan ring support bracket (7) onto the main bracket (1) using bolts (8) and to the fan ring with hardware (9-11) at mounting location [D].
13. Tighten air cleaner and fan ring support hardware securely.

For use w/ Rear-Ported SAE Two-Bolt 'A' Flange Pump, 8-Groove Clutch  
Recommended 1.75in<sup>3</sup> or 8 gal. Pump w/ 12hp Restriction or Smaller  
Approximately 160% Overdriven w/ 5-1/2" Diameter Clutch

## INSTALLATION NOTES (CONTINUED) / DISCLAIMER

---

14. Install new drive belt (23) onto the engine and route it as shown in the diagram.

**IMPORTANT: THE BELT MUST BE IN THE MIDDLE 8-GROOVES OF ALL PULLEYS ON THE ENGINE**

15. Reinstall the charge air tube and tighten the clamps properly.

16. Secure the heater hose to the charge air tube with zip ties (18) provided.

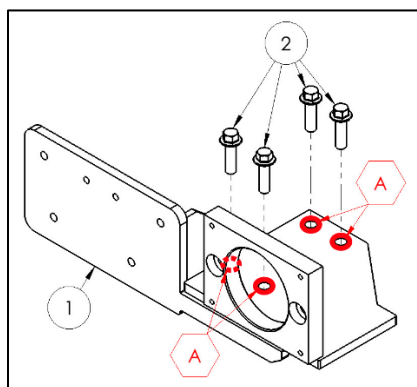
17. Reconnect the negative battery cable(s).

**CAUTION:** Before starting the engine, check to make certain no wires, hoses, etc. that may have been disturbed during installation do not come in contact with any hot or moving parts. Properly refill any fluids that may have been drained. Check for leaks. Run the engine. Check for proper belt tracking and clearance of any hoses, wires, etc. It is the installer's responsibility to correct/adjust any components, if necessary, before the vehicle is put into service.

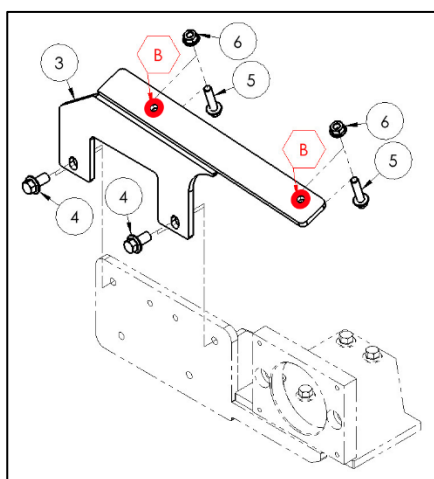
CW Mill Equipment Co., Inc. Mounting Kit and Mounting Kit Component Disclaimer: (1.) Due to the custom nature and variation of all add-on systems of this type, no complete system kits are offered by the manufacturer, and any group of parts marketed as a kit is limited to only the individually defined parts in that specific kit. The system designer's rotating accessory components are not included, offered, or fully known by the manufacturer. In addition to the absence of the rotating accessory system, other potential components such as additional clamps, brackets, wear liners, hardware, or other items that may be required by the system designer must be identified and supplied by the actual system designer. (2.) Due to vehicle manufacturer's assembly tolerances, production changes, and installation variances, it is the buyer's responsibility to ensure adequate clearance for all components including space for and safe location of the fan, radiator, all lines, and wires. Check for possible movement, vibration, friction points, heat exposure and/or shifting of any and all components such as hoses, wires, and all other components including those that may otherwise be considered non-moving and/or unaffected by the installation (3.) The buyer is responsible for the entire installation of a mounting kit as the mounting kit is part of a custom process controlled by the buyer through their whole system design and directed installer as the installer evaluates, locates, routes, aligns, and tightens all components while determining if additional clamps, brackets, wear-liners, or other components may be required, beyond those included in the kit. Any additional items required, beyond those included in the kit, are to be provided at the expense of the buyer. (4.) The buyer is responsible for the development and communication of their whole system installation procedures, safety precautions, application, and use of the engine accessory mounting kit in their system, including efforts to maintain vehicle control and prevent pinch, wear, impact, and/or burn exposure on all hoses, wires, and other parts. (5.) The buyer is responsible for providing trained and experienced installation decision making with technical know-how to apply professional judgment that specifically applies to each individual installation. The buyers chosen installers must be qualified and experienced technicians that are familiar with the vehicle and accessory being mounted as well as the buyer's whole system design and installation procedures associated with the kit. (6.) The buyer is responsible for determining and achieving compliance to all regulatory issues that apply to the use of all products. (7.) The manufacturer reserves the right to make changes and/or improvements to any product at any time with or without notice.

For use w/ Rear-Ported SAE Two-Bolt 'A' Flange Pump, 8-Groove Clutch  
 Recommended 1.75in<sup>3</sup> or 8 gal. Pump w/ 12hp Restriction or Smaller  
 Approximately 160% Overdriven w/ 5-1/2" Diameter Clutch

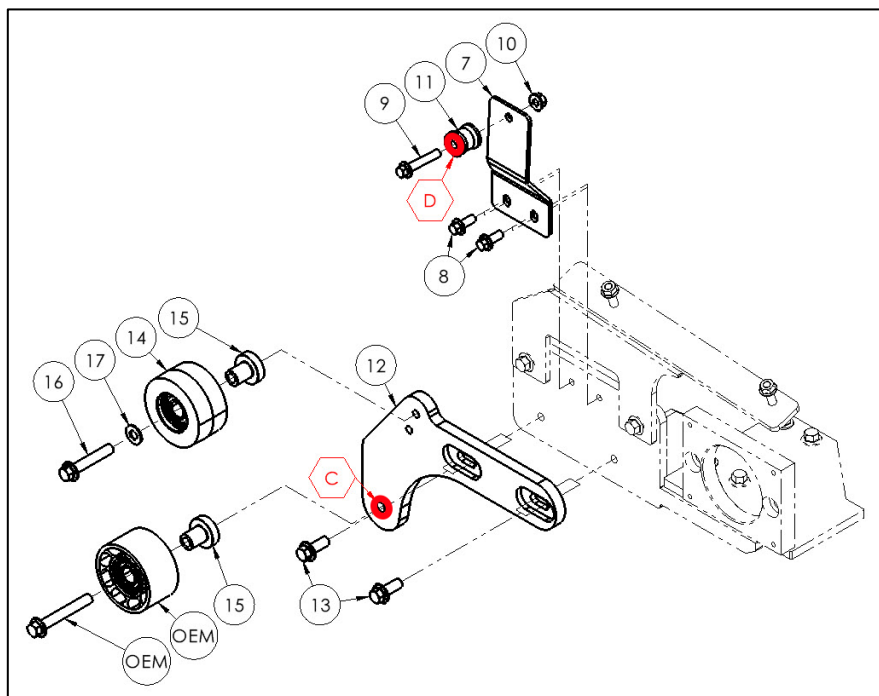
## Parts List



Main Bracket (1) & Mounting Hardware (2)



Air Cleaner Support Bracket (3)  
 & Mounting Hardware (4-6)



Fan Ring Support Bracket (7) & Mounting Hardware (8-11)

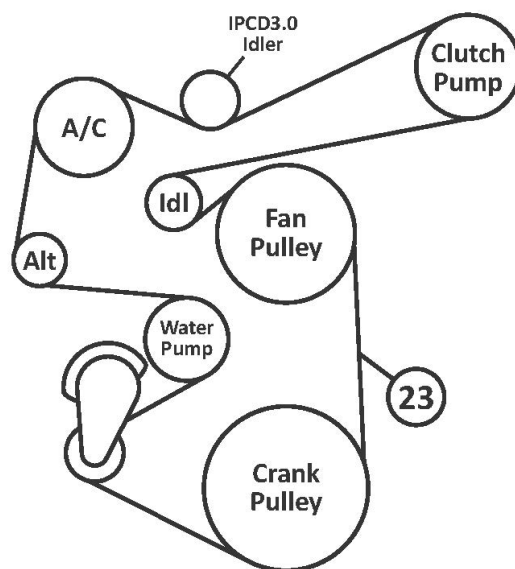
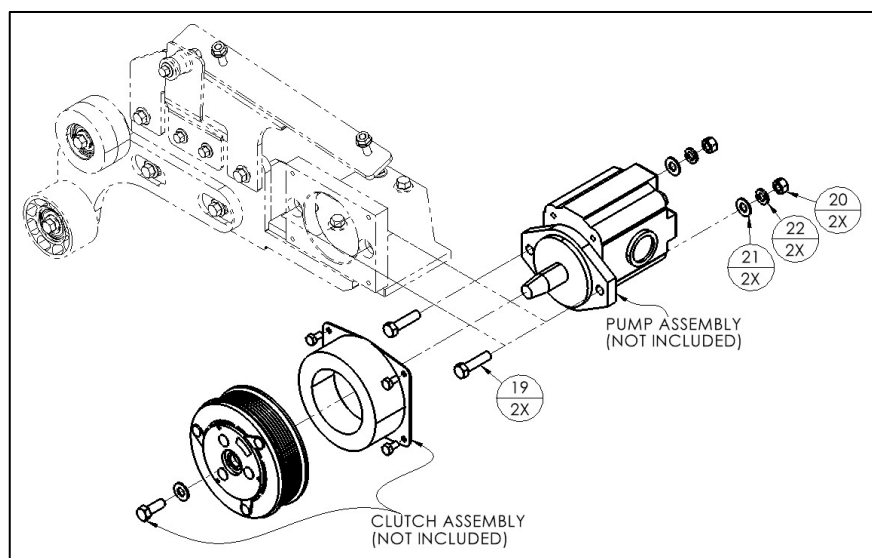
Idler Mounting Bracket (12) & Mounting Hardware (13)

Smooth Idler Assembly (14-17) & OEM Idler Mounting Hardware (15)

PARTS LIST							
Item	Part Number	Description	Qty.	Item	Part Number	Description	Qty.
<b>Main Bracket</b>				10	1013333	M8-1.25 10.9Gr Hex Flg. Nut	1
1	IMP82A-I8	Main Bracket	1	11	IMB823	1" Fan Ring Support Spacer	1
<b>Main Bracket Mounting Hardware</b>				<b>Idler Mounting Bracket</b>			
2	1022566	M10-1.5 x 35mm 10.9Gr Hex Flg. Bolt	4	12	IMB821	Idler Mounting Bracket	1
<b>Air Cleaner Support Bracket</b>				<b>Idler Mounting Bracket Mounting Hardware</b>			
3	IMB822	Air Cleaner Support Bracket	1	13	1013350	M10-1.5 x 25mm 10.9Gr Hex Flg. Bolt	2
<b>Air Cleaner Support Bracket Mounting Hardware</b>				<b>Smooth Idler Assembly &amp; OEM Idler Mounting Hardware</b>			
4	1008390	M10-1.5 x 20mm 10.9Gr Hex Flg. Bolt	2	14	IPCD3.0	3" Dia. Machined Smooth Idler	1
5	1018224	M8-1.25 x 35mm 10.9Gr Hex Flg. Bolt	2	15	CMB741	Machined Idler Bushing	2
6	1013333	M8-1.25 10.9Gr Hex Flg. Nut	2	16	1018225	M10-1.5 x 55mm 10.9Gr Hex Flg. Bolt	1
<b>Fan Ring Support Bracket</b>				17	1002596	3/8" Flat Washer	1
7	IMB820	Fan Ring Support Bracket	1	<b>Heater Hose Zip Ties (Not Shown)</b>			
<b>Fan Ring Support Bracket Mounting Hardware</b>				18	1005417	14" Zip Tie	3
8	1013329	M8-1.25 x 20mm 10.9Gr Hex Flg. Bolt	2				
9	1022568	M8-1.25 x 45mm 10.9Gr Hex Flg. Bolt	1				

For use w/ Rear-Ported SAE Two-Bolt 'A' Flange Pump, 8-Groove Clutch  
 Recommended 1.75in<sup>3</sup> or 8 gal. Pump w/ 12hp Restriction or Smaller  
 Approximately 160% Overdriven w/ 5-1/2" Diameter Clutch

## Parts List / Belt Routing

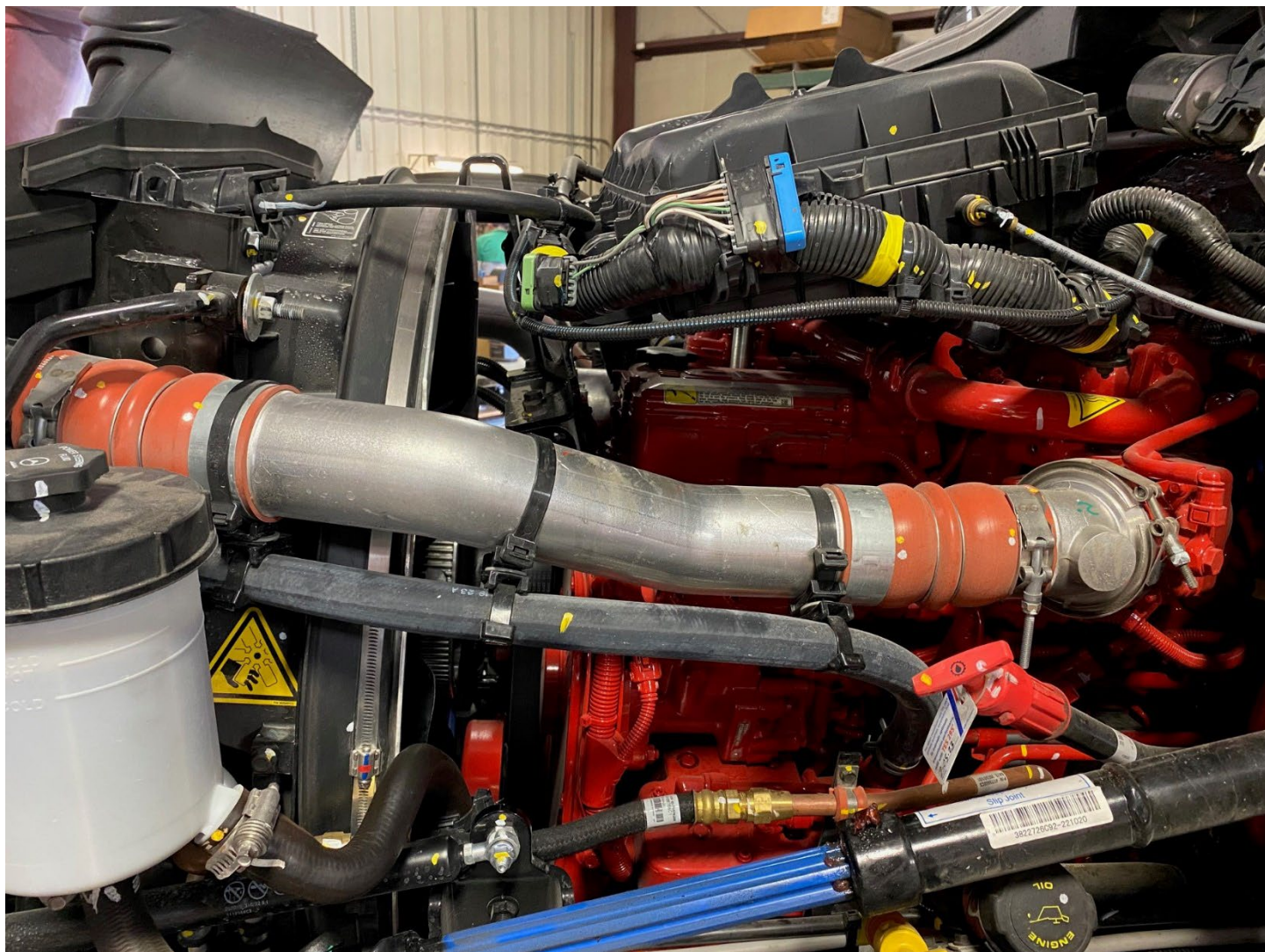


PARTS LIST			
Item	Part Number	Description	Qty.
<b>Clutch Pump Mounting Hardware</b>			
19	1005139	3/8"-16 x 1-1/2" NC Gr5 Hex Bolt	2
20	1010314	3/8"-16 NC Gr5 Hex Nut	2
21	1002596	3/8" Flat Washer	2
22	1010315	3/8" Lock Washer	2
<b>Belt (Only One Belt is Supplied)</b>			
23	1081253	Goodyear 8-Groove, 125.3" Belt	1
	5081254	Dayco 8-Groove, 125.4" Belt	1
	K081253	Gates 8-Groove, 125.3" Belt	1



For use w/ Rear-Ported SAE Two-Bolt 'A' Flange Pump, 8-Groove Clutch  
Recommended 1.75in<sup>3</sup> or 8 gal. Pump w/ 12hp Restriction or Smaller  
Approximately 160% Overdriven w/ 5-1/2" Diameter Clutch

## Reference Images



Charged Air Tube Assembly



**2024 International MV607**  
**8.9L Cummins ISL-9 Diesel w/ A/C**

## Reference Images





For use w/ Rear-Ported SAE Two-Bolt 'A' Flange Pump, 8-Groove Clutch  
 Recommended 1.75in<sup>3</sup> or 8 gal. Pump w/ 12hp Restriction or Smaller  
 Approximately 160% Overdriven w/ 5-1/2" Diameter Clutch

## Reference Images



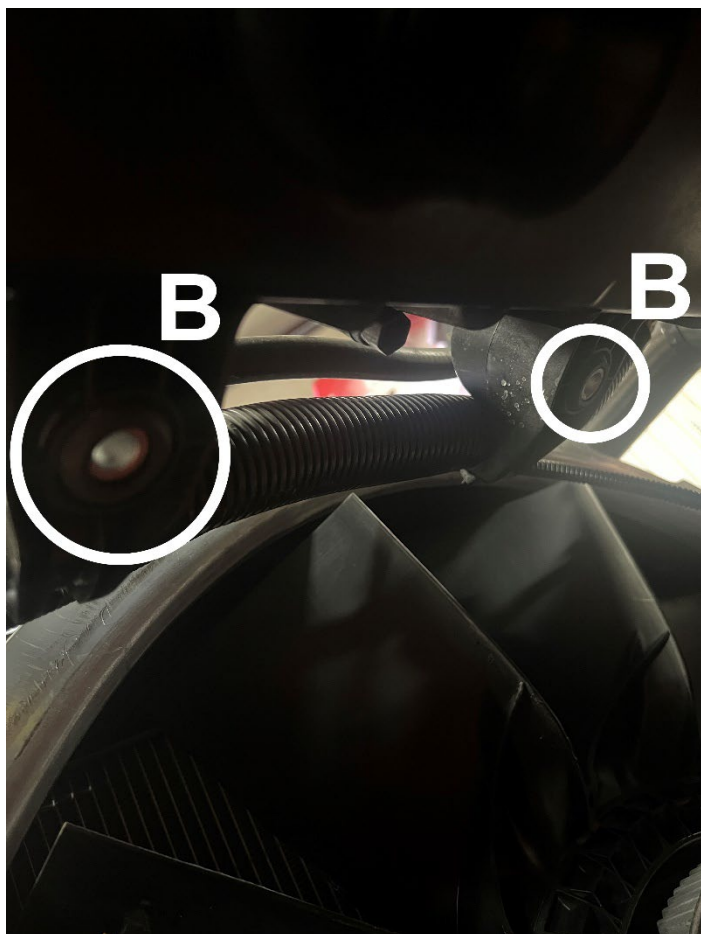
**Main Bracket Mounting Locations [A]**



**Main Bracket Installed  
 (As Shown for Auxiliary A/C Compressor Application)**

For use w/ Rear-Ported SAE Two-Bolt 'A' Flange Pump, 8-Groove Clutch  
 Recommended 1.75in<sup>3</sup> or 8 gal. Pump w/ 12hp Restriction or Smaller  
 Approximately 160% Overdriven w/ 5-1/2" Diameter Clutch

## Reference Images



**Air Cleaner Support Bracket  
 Mounting Locations [B]**



**Air Cleaner Support Bracket Installed**

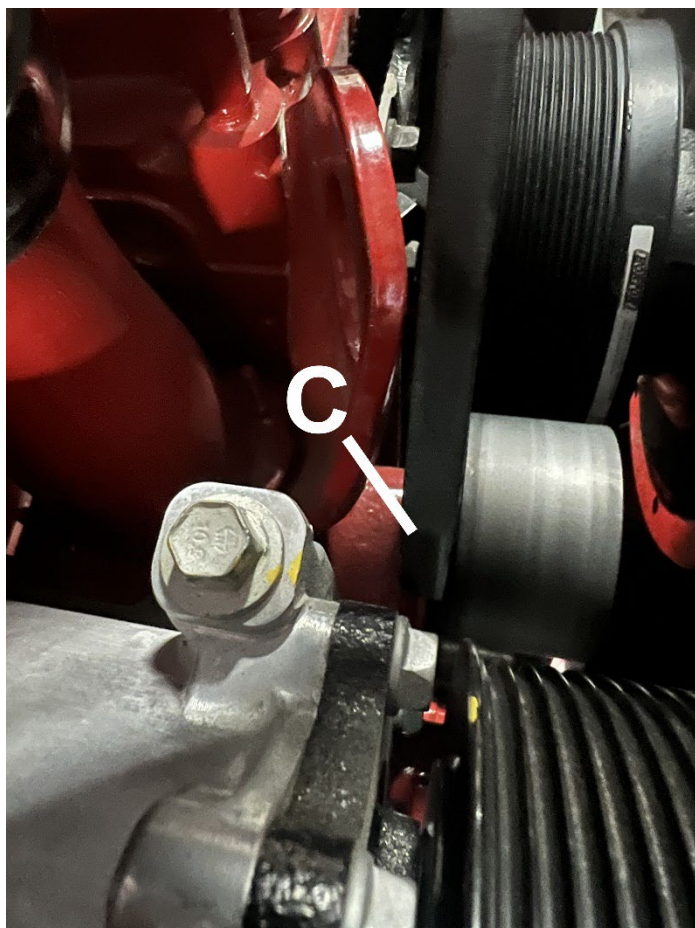


## IMK82A-I8

2024 International MV607  
8.9L Cummins ISL-9 Diesel w/ A/C

For use w/ Rear-Ported SAE Two-Bolt 'A' Flange Pump, 8-Groove Clutch  
Recommended 1.75in<sup>3</sup> or 8 gal. Pump w/ 12hp Restriction or Smaller  
Approximately 160% Overdriven w/ 5-1/2" Diameter Clutch

### Reference Images



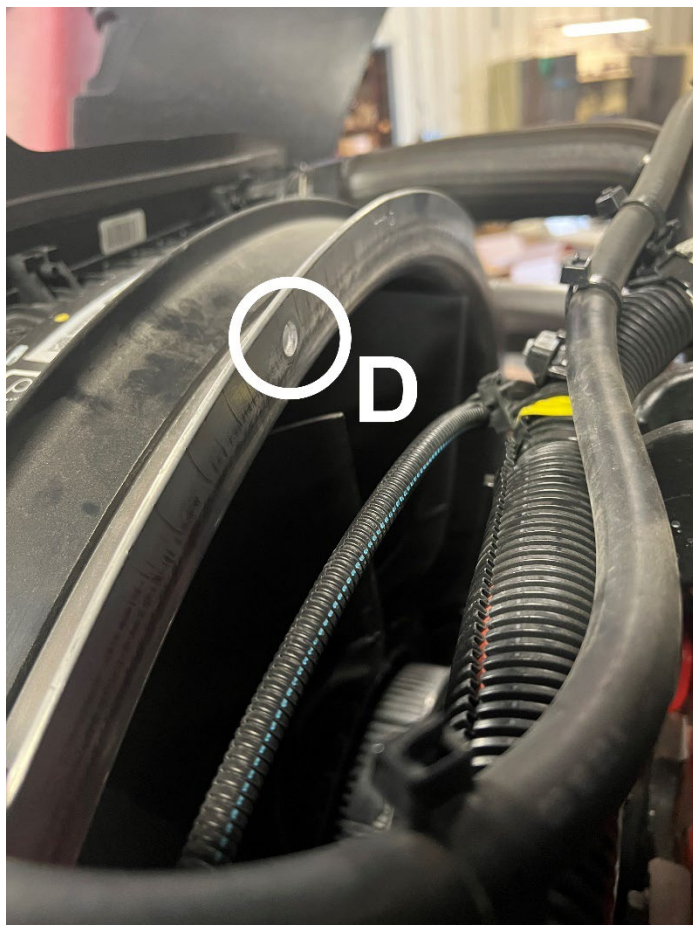
Idler Mounting Bracket  
Mounting Location [C]



Idler Mounting Bracket Installed

For use w/ Rear-Ported SAE Two-Bolt 'A' Flange Pump, 8-Groove Clutch  
 Recommended 1.75in<sup>3</sup> or 8 gal. Pump w/ 12hp Restriction or Smaller  
 Approximately 160% Overdriven w/ 5-1/2" Diameter Clutch

## Reference Images



Fan Ring Support Bracket  
 Mounting Location [D]

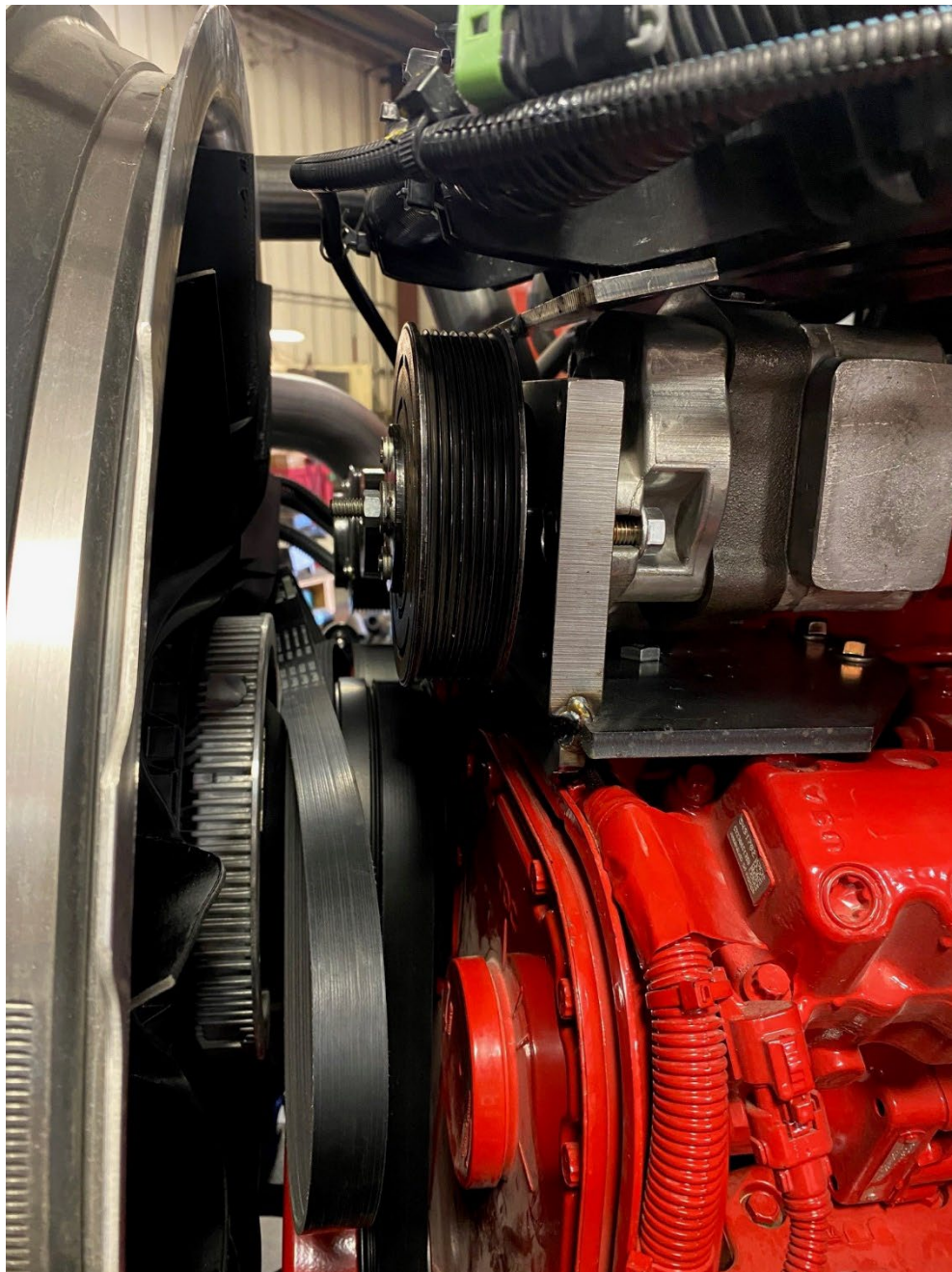


Fan Ring Support Bracket Installed



For use w/ Rear-Ported SAE Two-Bolt 'A' Flange Pump, 8-Groove Clutch  
Recommended 1.75in<sup>3</sup> or 8 gal. Pump w/ 12hp Restriction or Smaller  
Approximately 160% Overdriven w/ 5-1/2" Diameter Clutch

## Reference Images



Aftermarket Clutch Pump Installed