



**CW Mill Equipment Co., Inc.**  
14 Commerce Drive Sabetha, KS 66534  
Phone: (785) 284-3454  
Fax: (785) 284-3601  
Email: brackets@cwmill.com  
Website: [www.cwkits.com](http://www.cwkits.com)

# CMK132SD508-I6

2020-2024 Chevrolet Silverado 1500  
2020-2024 GMC Sierra 1500  
5.3L V8 Gas w/ A/C, w/o Dual Alternators

Requires 6-Groove Clutch  
For use w/ TM13 TM15 or TM16 Ear Mount Compressor

On 2020 and newer model year trucks, either, GM part number 12725728 will need to be purchased and replace the OEM water pump.  
And/or the OEM water pump can be sent back to CW Mill Equipment Co., Inc. to be machined for this mounting kit to work.

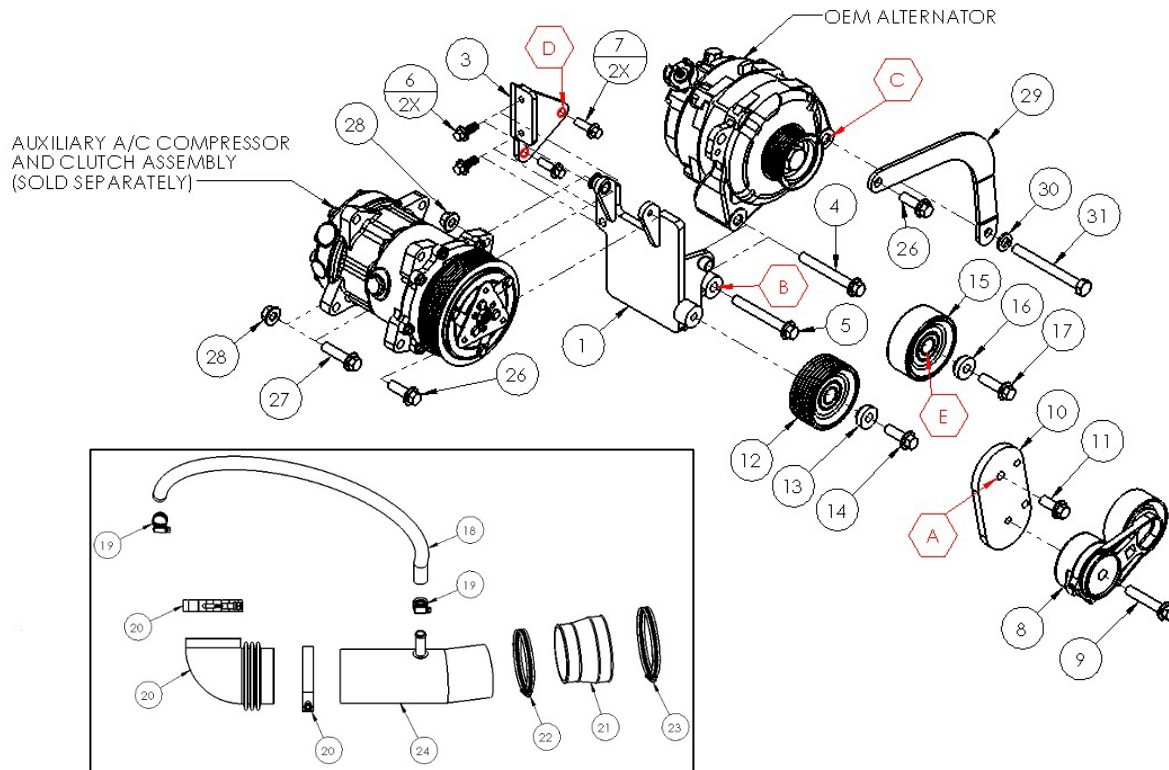
## INSTALLATION NOTES

---

1. The buyer is responsible for providing trained and experienced installation decision making with technical know-how to apply professional judgment that specifically applies to each individual installation.
2. Be sure to read and understand all available information including but not limited to instructions, warnings, sale terms, and warranties for the vehicle and all system components prior to attempting installation.
3. Disconnect the negative battery cable and remove the air duct from the intake to the air filter box. It will not be reused. Remove the OEM fan/alternator belt. It is a stretch-fit belt that will not be reused. Cutting the belt is the easiest way to remove it.
4. Install tensioner bracket (10) with bolt (11) at location [A]. Torque bolt to 25 ft/lbs. Install tensioner (8) with bolt (9). Torque bolt to 20 ft/lbs.
5. Remove the OEM alternator bolt (5) at location [B] and loosen the alternator bolt at location [C]. Swing the alternator up in a clockwise direction if facing towards the front of the engine, and install the A/C bracket (1) at location [B] with the OEM alternator bolt (5) that was removed. Do not tighten yet. Attach the alternator to the A/C bracket with bolt (4) loosely. Install rear brace (3) with bolts (7) into the cylinder head at location [D] and bolts (6) into the A/C bracket. Do not tighten yet. Tighten the OEM alternator bolt first to 25 ft/lbs. Then alternator-A/C bracket bolt (4) to 30 ft/lbs. Evenly tighten all rear brace bolts, then torque to 15 ft/lbs.
6. Install the A/C compressor to the A/C bracket using bolts (26), (27) and nut (28). Remove the inside alternator bolt at location [C]. Install A/C compressor brace (29) with flat washer (30) and bolt (31) at the alternator location [C], and bolt (26) with nut (28) to the A/C compressor. Torque bolts to 25 ft/lbs. Install grooved idler (12) with alignment bushing (13) and bolt (14) onto the A/C bracket. Torque to 25 ft/lbs. Install smooth idler (15), alignment bushing (16) and bolt (17) at location [E]. Torque bolt to 15 ft/lbs.
7. Install belt (25) and route it as shown in the illustration. Install 90° rubber elbow assembly (20) onto the intake inlet with the bellows to the air filter side. Install the 3-1/2" to 4" coupler (21) onto the air filter box with clamps (22,23). Install the steel air duct tube (24) into the coupler and the elbow. Position it so the 5/8" nipple is pointing at approximately a 45° angle upward and rearward. Tighten all clamps securely. Remove the PCV hose from the passenger side valve cover and install one end of the 5/8" oil hose (18) there and the other end to the nipple on the air duct with clamps (19). Tighten hose clamps securely.

**NOTE:** The OEM A/C line attached to the radiator support may need to slide to the passenger side slightly and secured to gain clearance to the add on A/C compressor.

**CAUTION:** Before starting the engine, check to make certain no wires, hoses, etc. that may have been disturbed during installation do not come in contact with any hot or moving parts. Run the engine and check for proper belt tracking, adjust if necessary.



Hose Assembly (18-24) Top View

PARTS LIST							
Item	Part Number	Description	Qty.	Item	Part Number	Description	Qty.
<b>Main Bracket</b>				16	FMB480	Idler Alignment Bushing	1
1	CMB132SD508-1	Main Bracket	1	17	1018224	8mm x 35mm Flange Bolt	1
2	1011888A	1255-0090 Slide Bushing (Installed)	2	<b>Hose Assembly</b>			
<b>Rear Brace</b>				18	1010299	5/8" Oil Hose	25"
3	CMB132SD508-2	Rear Brace	1	19	1018276	#8 Hose Clamps	2
<b>Mounting Hardware (Main Bracket)</b>				20	1018282	90° Air Duct Assembly (CMK132: 3½")	1
4	1006928	10mm x 80mm Flange Bolt	1	21	1018281	3-1/2" to 4" Coupler	1
5	N/A	OEM Alternator Bolt	1	22	1016326	#56 Hose Clamp	1
<b>Mounting Hardware (Rear Brace)</b>				23	1016327	#64 Hose Clamp	1
6	1013329	8mm x 20mm Flange Bolts	2	24	C132AD	Steel Tube	1
7	1011887	8mm x 25mm Flange Bolts	2	<b>Belt</b>			
<b>Tensioner</b>				25	5061065	Dayco 6-Groove 106.5" Belt	1
8	89396	Dayco Tensioner	1	<b>A/C Compressor Mounting Hardware</b>			
9	1018225	10mm x 55mm Flange Bolt	1	26	1006927	10mm x 30mm Flange Bolts	2
<b>Tensioner Bracket and Hardware</b>				27	1006933	10mm x 40mm Flange Bolt	1
10	CMB132SD508-3	Tensioner Bracket	1	28	1018204	10mm Flange Nuts	2
11	1004000M	10mm x 25mm Bolt (.180" M)	1	<b>A/C Compressor L Brace and Hardware</b>			
<b>Grooved Idler Pulley Assembly</b>				29	CMB132SD508-4	Compressor L Brace	1
12	89051	Grooved Idler Pulley	1	30	1003748	10mm Flat Washer	1
13	FMB480	Idler Alignment Bushing	1	31	1003981	10mm x 100mm Bolt	1
14	1006927	10mm x 30mm Flange Bolt	1				
<b>Smooth Idler Pulley Assembly</b>							
15	TIPCS2.5	Smooth Idler Pulley	1				

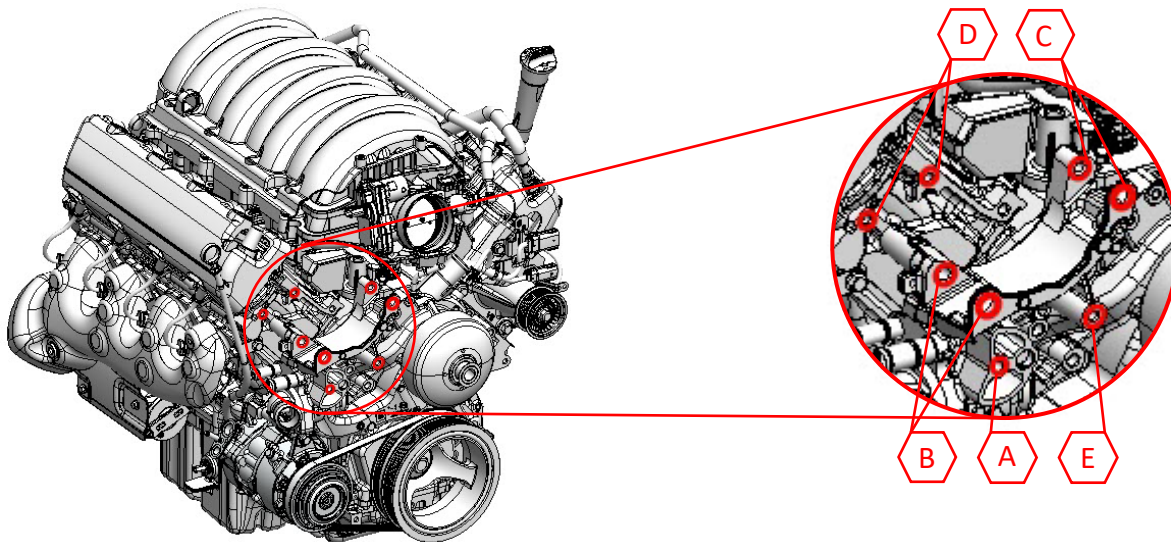


**CW Mill Equipment Co., Inc.**  
14 Commerce Drive Sabetha, KS 66534  
Phone: (785) 284-3454  
Fax: (785) 284-3601  
Email: brackets@cwmill.com  
Website: [www.cwkits.com](http://www.cwkits.com)

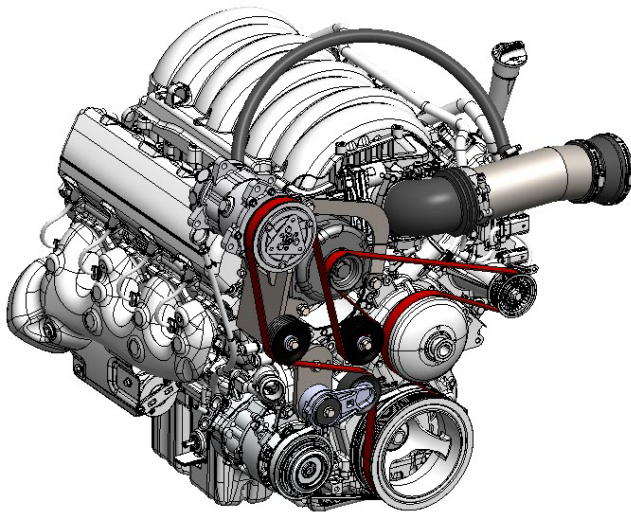
# CMK132SD508-I6

2020-2024 Chevrolet Silverado 1500  
2020-2024 GMC Sierra 1500  
5.3L V8 Gas w/ A/C, w/o Dual Alternators

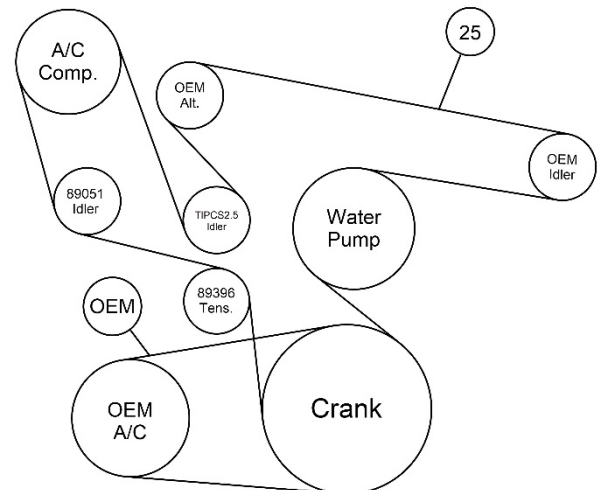
Requires 6-Groove Clutch  
For use w/ TM13 TM15 or TM16 Ear Mount Compressor



Mounting Locations Details



Kit Assembly



Belt Routing

Disclaimer: (1.) Due to the custom nature and variation of all add-on systems of this type, no complete system kits are offered by the manufacturer, and any group of parts marketed as a kit is limited to only the individually defined parts in that specific kit. The system designer's rotating accessory components are not included, offered, or fully known by the manufacturer. In addition to the absence of the rotating accessory system, other potential components such as additional clamps, brackets, wear liners, hardware, or other items that may be required by the system designer must be identified and supplied by the actual system designer. (2.) Due to vehicle manufacturer's assembly tolerances, production changes, and installation variances, it is the buyer's responsibility to ensure adequate clearance for all components including space for and safe location of the fan, radiator, all lines, and wires. Check for possible movement, vibration, friction points, heat exposure and/or shifting of any and all components such as hoses, wires, and all other components including those that may otherwise be considered non-moving and/or unaffected by the installation (3.) The buyer is responsible for the entire installation of a mounting kit as the mounting kit is part of a custom process controlled by the buyer through their whole system design and directed installer as the installer evaluates, locates, routes, aligns, and tightens all components while determining if additional clamps, brackets, wear-liners, or other components may be required, beyond those included in the kit. Any additional items required, beyond those included in the kit, are to be provided at the expense of the buyer. (4.) The buyer is responsible for the development and communication of their whole system installation procedures, safety precautions, application, and use of the engine accessory mounting kit in their system, including efforts to maintain vehicle control and prevent pinch, wear, impact, and/or burn exposure on all hoses, wires, and other parts. (5.) The buyer is responsible for providing trained and experienced installation decision making with technical know-how to apply professional judgment that specifically applies to each individual installation. The buyers chosen installers must be qualified and experienced technicians that are familiar with the vehicle and accessory being mounted as well as the buyer's whole system design and installation procedures associated with the kit. (6.) The buyer is responsible for determining and achieving compliance to all regulatory issues that apply to the use of all products. (7.) The manufacturer reserves the right to make changes and/or improvements to any product at any time with or without notice.