

INSTALLATION NOTES

1. Remove O.E.M. belt. Remove the fan and lay inside of shroud taking care not to damage the radiator. Remove the power steering fluid reservoir and set aside. Remove the O.E.M. power steering reservoir bracket from steering gear box. The bolts will need to be cut to remove them. New bolts are supplied in the kit. Remove the driver side radiator support and remove the driver side radiator support bracket. Retain these bolts for later use.
2. Install the auxiliary alternator bracket (3) using the O.E.M. bolts from the original radiator support bracket. Install auxiliary alternator using bolts (13,20), lock washers (14,19), nut (15), flat washer (18), slide (17) and spacer (16). Install pulley (1) and fan using bolts (2). ***NOTE: THE O.E.M. ACCESSORY DRIVE BELT AND AUX. ALTERNATOR BELT MUST BE PUT INTO PLACE BEFORE INSTALLING THE FAN.***
3. Install tensioner (4) using bolt (5). Install idler (7) using bolt (8) and bushing (6). Reinstall the O.E.M. belt. Install the aux. alternator belt (9) according to the belt diagram on the back. Reinstall driver side radiator support using O.E.M. bolts. Install new power steering reservoir bracket (10) to steering gear box using bolts (11) and lock nuts (12). Reinstall power steering reservoir using O.E.M. hardware.
4. Check all engine compartment hoses and electrical wiring that may have been disturbed or rerouted during kit installation to prevent any kind of damage. Check clearances with all components. Check belt alignment before running. Then check for proper belt tracking. Belt alignment is the installer's responsibility.

FLMK70L3S-8

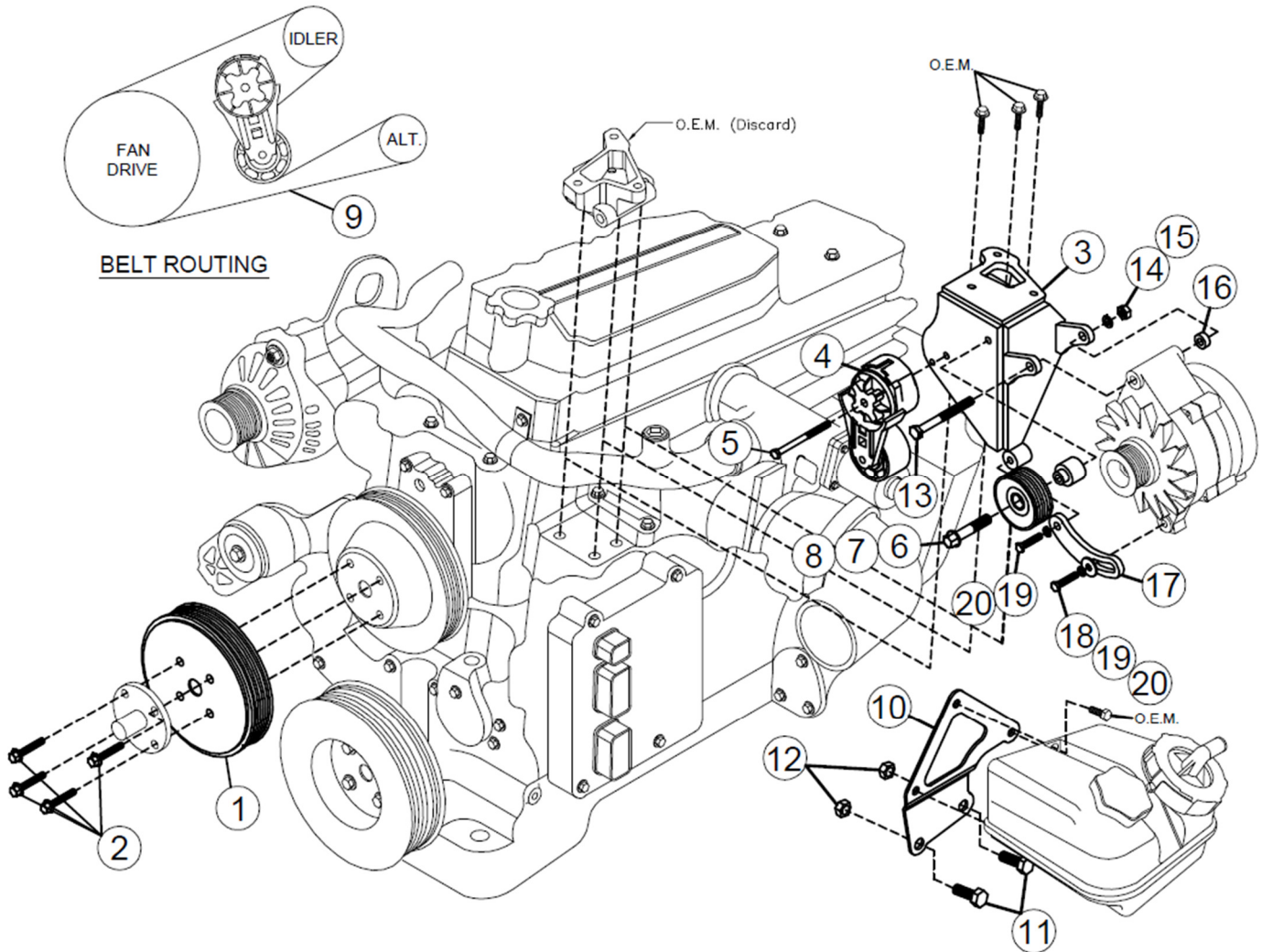
2011-2024

FREIGHTLINER M2

6.7L CUMMINS ISB

FOR USE W-WO AC / Requires 8 Groove Pulley

Will NOT work on 2019-2024
models with air release fan clutch.



PARTS LIST

- | | |
|---------------------------|--------------------------|
| 1. FLPC708 (1) | 11. 1/2 x 1-3/4 (2) |
| 2. 10mm x 30mm Flange (4) | 12. 1/2 Lock Nut (2) |
| 3. FLMP70L3S-8 (1) | 13. 7/16 x 5 (1) |
| 4. 89438-016 (1) | 14. 7/16 Lock Washer (1) |
| 5. 10mm x 80mm Flange (1) | 15. 7/16 Nut (1) |
| 6. FMB2615 (1) | 16. SP88-.500 (1) |
| 7. 89053 (1) | 17. L3SB3 (1) |
| 8. 10mm x 50mm Flange (1) | 18. 3/8 Flat Washer (1) |
| 9. 5080545 Belt (1) | 19. 3/8 Lock Washer (2) |
| 10. FLMB701L3S (1) | 20. 3/8 x 1-1/4 (2) |