



# RMK61A-6

2019-2024 RAM 2500-5500

6.7L I6 Cummins Diesel w/ A/C, w/-w/o OEM Dual Alternators

Must use Parker P16 Series SAE Two-Bolt 'A' Flange Pump; Must be Side Ported  
Must use P16-85 Section Size Pump or Smaller (Clearance)

For use with 6-Groove Clutch

**NOTE: For Trucks Equipped w/ Lane Departure**

**NOTE: Trucks Equipped w/ OEM Dual Alternators,  
the Secondary Alternator Will be Removed**

## INSTALLATION NOTES

---

1. The buyer is responsible for providing trained and experienced installation decision making with technical know-how to apply professional judgment that specifically applies to each individual installation.
2. Be sure to read and understand all available information including but not limited to instructions, warnings, sale terms, and warranties for the vehicle and all system components prior to attempting installation.
3. Disconnect the negative battery cables. Remove plastic cover over radiator. Remove upper radiator hose brace from the engine and hose. Leave the clamp around the hose in place as it will be reused. The upper radiator hose can be removed for easier access for installation.
4. Remove OEM serpentine belt. Remove the left hand (driver's) side fan shroud brace. Removal of power steering pump bolts will be needed. Discard brace. Reinstall power steering pump OEM bolts. Add power steering pump fitting (17) as shown in the image. If the truck is equipped with OEM dual alternators: Remove the secondary OEM alternator and wire at the box. Remove OEM alternator bracket.
5. Remove the upper grooved idler from the engine. Install add-on pulley assembly (1-4) in this location and torque bolt (4) to 35-38 ft/lbs. Make certain the 6-grooves of the pulley are towards the radiator. If truck is equipped with an OEM single alternator: Reinstall OEM serpentine belt, and use belt (23) as a spare replacement belt. If truck is equipped with an OEM dual alternator: Install multiple accessories belt (23).
6. Install the clutch pump onto bracket (5) with mounting hardware (18-21) according to manufacturer's specifications. Install the bracket and pump assembly onto the engine with one of bolts (6) at the inside hole location [A]. Do not tighten. Install hose brace (7) as shown in the illustration with bolts (6) at the other two-hole locations [A]. Torque bolts to 35-38 ft/lbs. Reattach the upper radiator hose to brace (7) with hardware (8-9). Install the coil and clutch with hardware according to manufacturer's specifications.
7. Install tensioner (14) onto bracket (5) with hardware (15-16) according to the illustrations. Torque bolt to 25 ft/lbs. Install belt (22) as shown. Install fan shroud brace (10) onto bracket (5) with bolt (11). Do not completely tighten. With brace (10) pointed forward. Secure brace (10) to the fan shroud with hardware (12-13), bolt (11).
8. Properly refill any fluids that may have been drained. Reconnect the negative battery cable.

**WARNING:** Before starting the engine. Check to make certain no wires, hoses, etc. that may have been disturbed during installation do not come in contact with any hot or moving parts. Run the engine and check for proper belt tracking, adjust if necessary. It is the installer's responsibility to make sure that all components are in proper position and alignment.

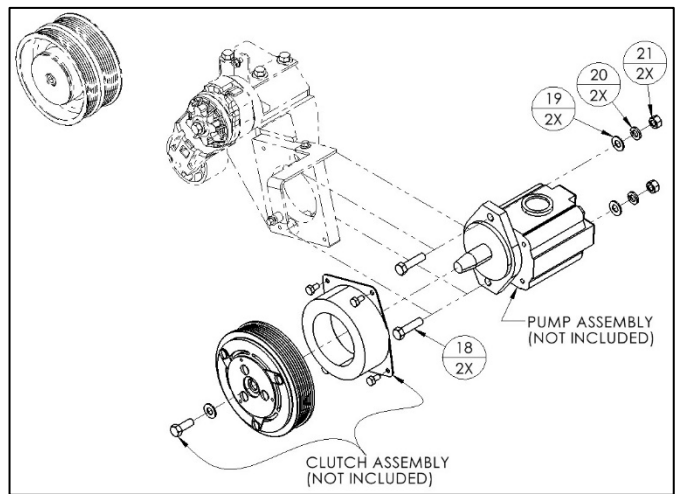
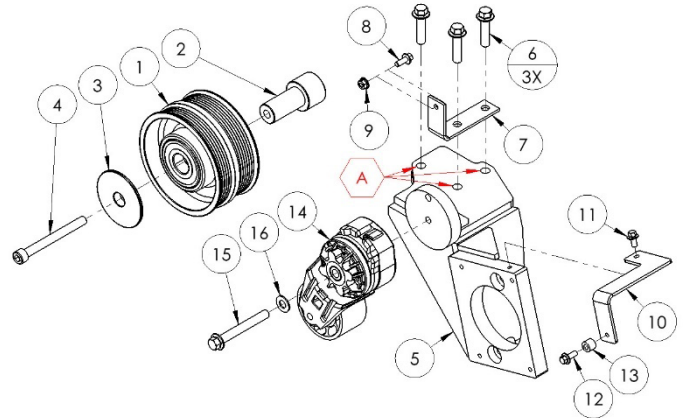
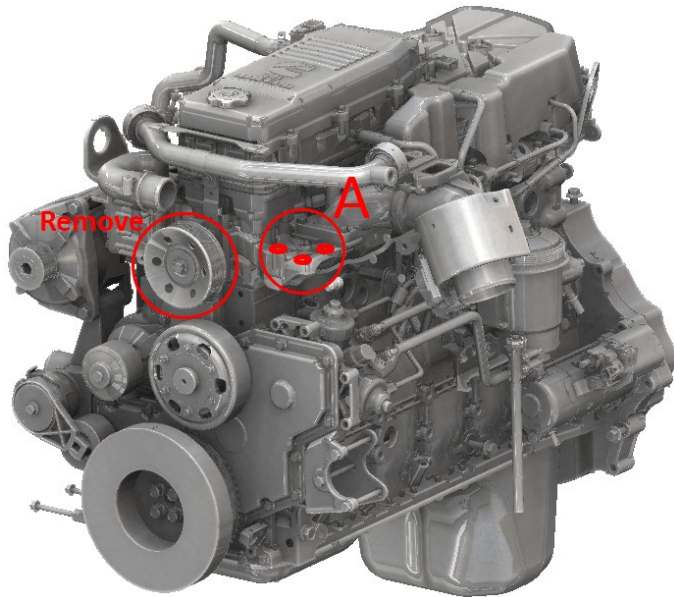
# RMK61A-6

2019-2024 RAM 2500-5500  
 6.7L I6 Cummins Diesel w/ A/C, w/-w/o OEM Dual Alternators

Must use Parker P16 Series SAE Two-Bolt 'A' Flange Pump; Must be Side Ported  
 Must use P16-85 Section Size Pump or Smaller (Clearance)  
 For use with 6-Groove Clutch

**NOTE: For Trucks Equipped w/ Lane Departure**  
**NOTE: Trucks Equipped w/ OEM Dual Alternators,**  
**the Secondary Alternator Will be Removed**

## Parts List

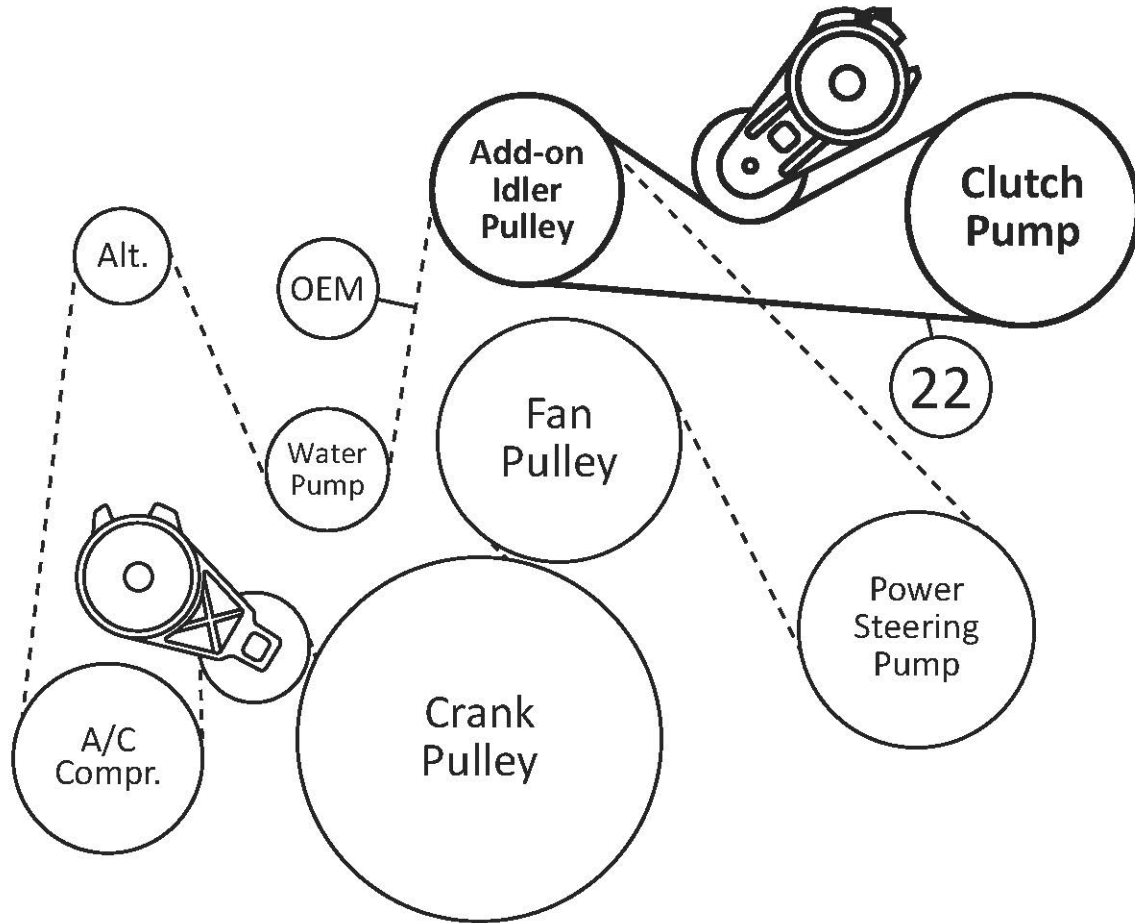


PARTS LIST							
Item	Part Number	Description	Qty.	Item	Part Number	Description	Qty.
<b>Add-on Idler Pulley Assembly (DPC556DA: Includes Items (1-4))</b>				12	1016329	M6-1.0 x 16mm 10.9Gr Hex Flg. Bolt	1
1	DPC556D	Add-on Idler Pulley	1	13	RMB60TM-6	Tapped Machined Bushing	1
2	DMB550D	Machined Idler Bushing (1-1/2" Diameter)	1	<b>Tensioner Assembly</b>			
3	DMB554	Machined Idler Dust Cover	1	14	89200B	Dayco Tensioner	1
4	1011648	M10-1.5 x 100mm 12.9Gr SHCS	1	15	1006928	M10-1.5 x 80mm 10.9Gr Hex Flg. Bolt	1
<b>Auxiliary Clutch Pump Mounting Bracket</b>				16	1007644	3/8" USS Flat Washer	1
5	RMB61A-6	Auxiliary Clutch Pump Mounting Bracket	1	<b>Power Steering Pump Fitting (Not Shown)</b>			
<b>Auxiliary Clutch Pump Mounting Hardware</b>				17	RMB603LD	Power Steering Pump Fitting	1
6	1006933	M10-1.5 x 40mm 10.9Gr Hex Flg. Bolt	3	<b>Auxiliary Clutch Pump Mounting Hardware</b>			
<b>Upper Radiator Hose Support Brace Assembly</b>				18	1005139	3/8"-16 x 1-1/2" Gr5 Hex Bolt	2
7	RMB613	Upper Radiator Hose Support Brace	1	19	1007644	3/8" USS Flat Washer	2
8	1016329	M6-1.0 x 16mm 10.9Gr Hex Flg. Bolt	1	20	1010315	3/8" Med Lock Washer	2
9	1016331	M6-1.0 10.9Gr Hex Flg. Nut	1	21	1010314	3/8"-16 Gr5 Hex Nut	2
<b>Fan Shroud Support Brace Assembly</b>							
10	RMB614	Fan Shroud Support Brace	1				
11	1016340	M6-1.0 x 12mm 10.9Gr Hex Flg. Bolt	1				

Must use Parker P16 Series SAE Two-Bolt 'A' Flange Pump; Must be Side Ported  
 Must use P16-85 Section Size Pump or Smaller (Clearance)  
 For use with 6-Groove Clutch

**NOTE: For Trucks Equipped w/ Lane Departure**  
**NOTE: Trucks Equipped w/ OEM Dual Alternators,**  
**the Secondary Alternator Will be Removed**

**Belt Routings (w/o OEM Dual Alternators)**

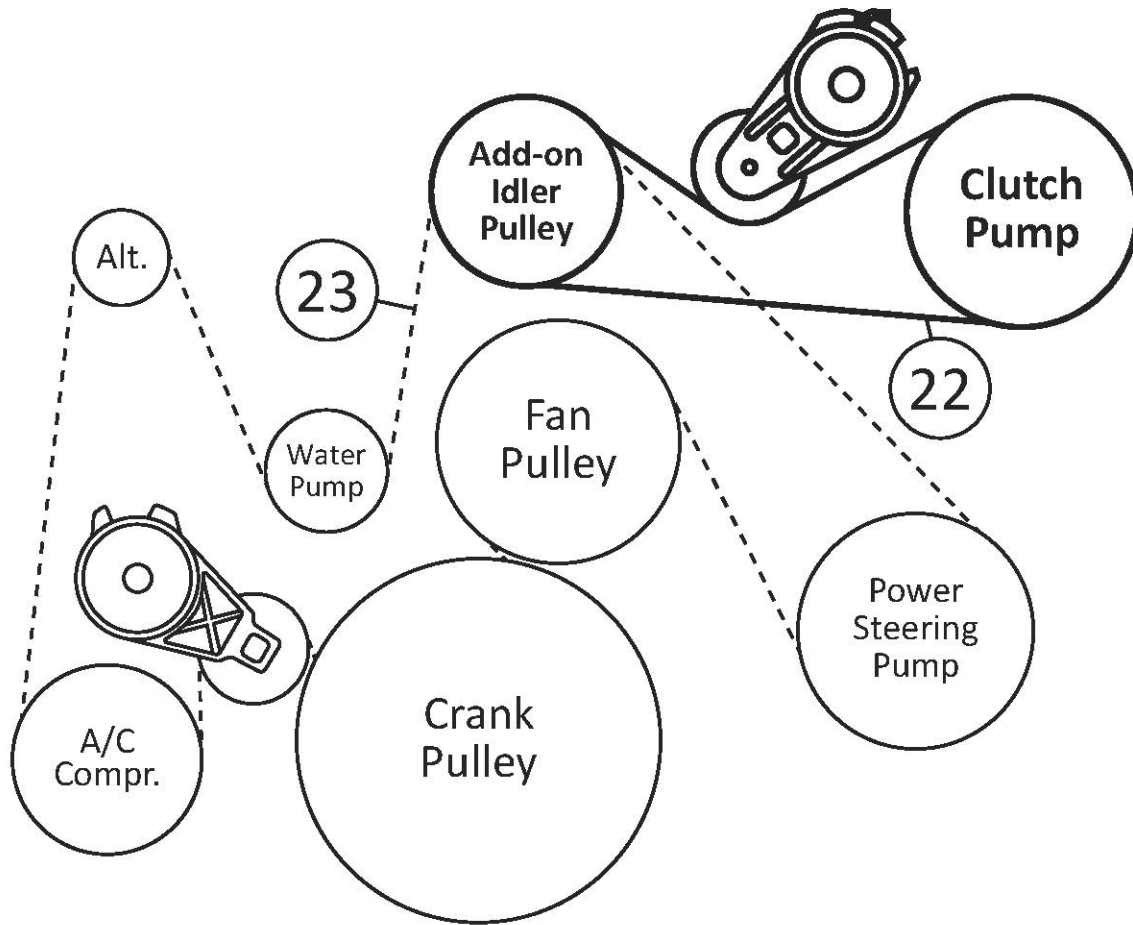


PARTS LIST			
Item	Part Number	Description	Qty.
<b>Belt</b>			
22	5060450	Dayco 6-Groove, 45.0" Belt (6" Clutch)	1
	5060440	Dayco 6-Groove, 44.0" Belt (5.5" Clutch)	1

Must use Parker P16 Series SAE Two-Bolt 'A' Flange Pump; Must be Side Ported  
 Must use P16-85 Section Size Pump or Smaller (Clearance)  
 For use with 6-Groove Clutch

**NOTE: For Trucks Equipped w/ Lane Departure**  
**NOTE: Trucks Equipped w/ OEM Dual Alternators,**  
**the Secondary Alternator Will be Removed**

**Belt Routings (w/ OEM Dual Alternators)**



PARTS LIST			
Item	Part Number	Description	Qty.
<b>Belt</b>			
22	5060450	Dayco 6-Groove, 45.0" Belt (6" Clutch)	1
	5060440	Dayco 6-Groove, 44.0" Belt (5.5" Clutch)	1
23	5081254	Dayco 8-Groove, 125.4" Belt	1

**CW** **CW Mill Equipment Co., Inc.**  
14 Commerce Drive Sabetha, KS 66534  
Phone: (785) 284-3454  
Fax: (785) 284-3601  
Email: brackets@cwmill.com  
**MOUNTING KITS** Website: [www.cwkits.com](http://www.cwkits.com)

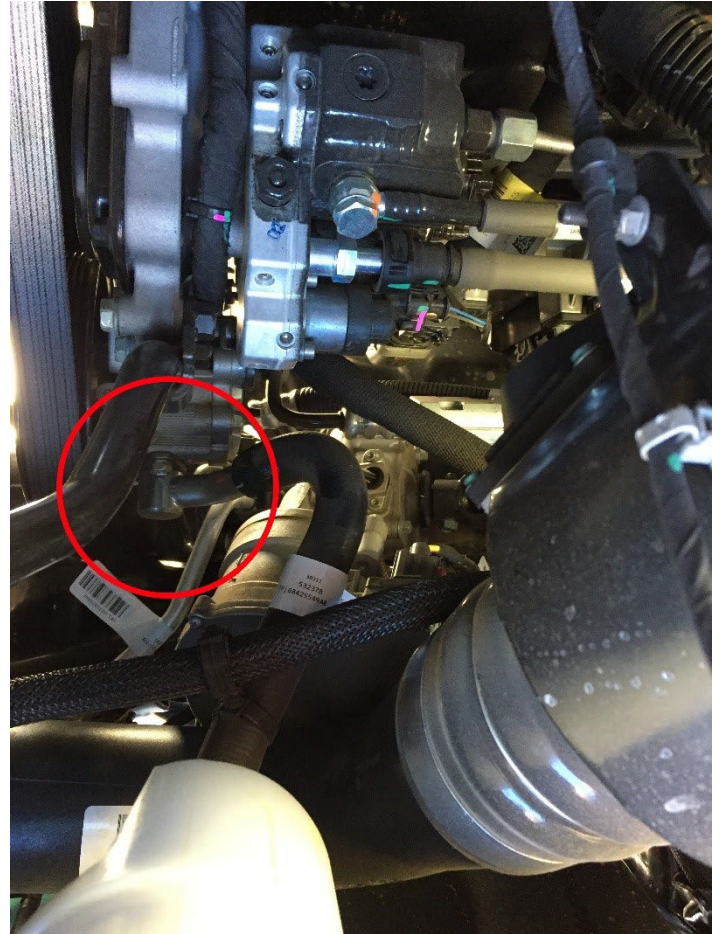
# RMK61A-6

2019-2024 RAM 2500-5500  
6.7L I6 Cummins Diesel w/ A/C, w/-w/o OEM Dual Alternators

Must use Parker P16 Series SAE Two-Bolt 'A' Flange Pump; Must be Side Ported  
Must use P16-85 Section Size Pump or Smaller (Clearance)  
For use with 6-Groove Clutch

**NOTE: For Trucks Equipped w/ Lane Departure**  
**NOTE: Trucks Equipped w/ OEM Dual Alternators,**  
**the Secondary Alternator Will be Removed**

## Power Steering Pump Fitting



Power Steering Fitting (17) (For Lane Departure Trucks)

