



RMK6092V-I8LD

2019-2024 RAM 2500-5500
6.7L I6 Cummins Diesel w/ AC, w/o OEM Dual Alternators

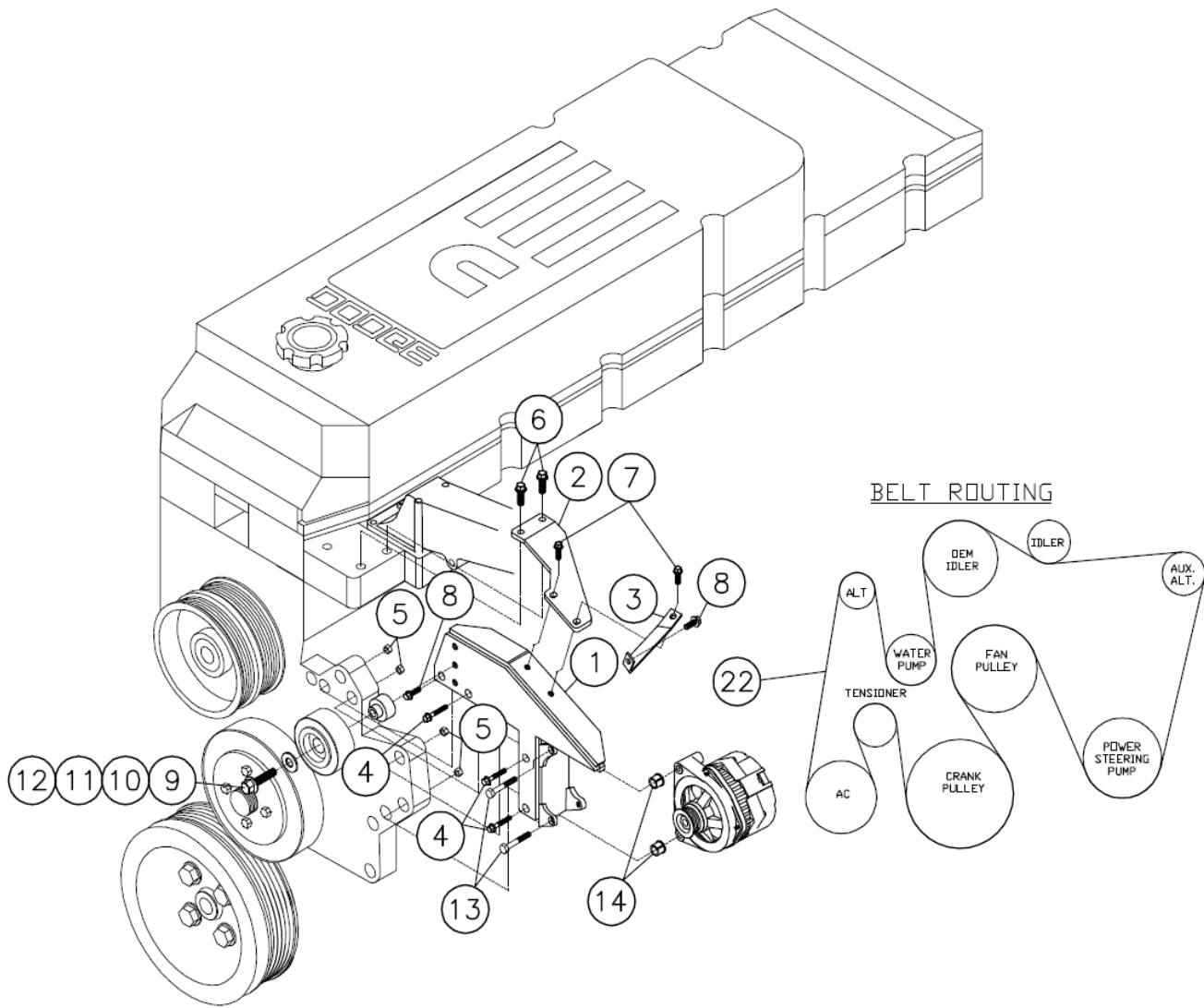
Requires 8-Groove Pulley
For use w/ Vortec 92V Style Alternator

NOTE: For use w/ Trucks Equipped w/ Lane Departure

INSTALLATION NOTES

1. The buyer is responsible for providing trained and experienced installation decision making with technical know-how to apply professional judgment that specifically applies to each individual installation.
2. Be sure to read and understand all available information including but not limited to instructions, warnings, sale terms, and warranties for the vehicle and all system components prior to attempting installation.
3. Disconnect the negative battery cables.
4. Remove the four nuts holding the fan shroud to the engine brackets. Remove the driver side fan shroud bracket from the engine, it will not be reused. Unplug the fan wire. Using the appropriate tool loosen the fan nut (fan nut has right hand threads). Then remove the fan and fan shroud from the engine compartment. Remove the engine belt.
5. On trucks equipped with the Lane Departure option, this procedure will need to be performed prior to installing the auxiliary alternator bracket:
 - a. Drain the power steering fluid and remove the fill hose at the power steering pump.
 - b. Remove the bolt holding the fill hose fitting to the pump and remove the fitting.
 - c. Remove the O-ring from the OEM fitting, and install it onto the new fitting (23). Using caution not to damage the O-ring. Install the new fitting (23) into the power steering pump reusing the OEM bolt.
 - d. Install the hose onto the new power steering fitting (23). NOTE: Rotate the hose for best clearances of any hot or moving parts, and so it does not kink the hose.
 - e. Fill the power steering reservoir with approved fluid and check for leaks. After the engine has been running check fluid level and top off if necessary.
6. Remove the driver side inner fender. Disconnect the 5/16" P/S hose at the T. Then route it to the outside of the charge air tube and reconnect. When doing this, if the cap is left on the P/S reservoir, the fluid will only leak a small amount. Push tabs in on the fuse box housing and lift the fuse box up to allow access to the bottom of the housing. Secure the hose to the bottom of the fuse box housing with the wire loom clamp (19), bolt (17), and nut (18) from under the fender as shown in the picture. If installing on a 4500 or 5500 chassis, the power steering hose mounted to the steering gear box will need to be moved. To do this, remove the nut and clamp from power steering hose on the steering gear box. Install relocating bracket (15) using O.E.M. nut and install the power steering hose to bracket (15) using the O.E.M. clamp and bolt (16) as shown in the second photo.
7. Using bolts (4) with nuts (5) and bolt (8), install the bracket (1) onto the engine. Remove the bolt holding the upper radiator hose to the engine. Install brace (2) onto the engine with two bolts (6) and onto the bracket with two 8mm x 20mm flange bolts (7). Secure bolts properly. Install the auxiliary alternator onto bracket (1) using bolts (13). Cut one inch from the back of the radiator hose brace and install it to the engine using the front bolt (6) of the bracket brace (2). Replace the inner fender with OEM hardware.
8. Install the idler (10) onto the bracket (1) using bolt (12), flat washer (11), and spacer (9) installing it into the lowest hole possible making it allowable to install the belt without excessive force. Install the belt (22) according to belt diagram. Using the clamp (21), bolt (20), and nut (5) provided, secure the small upper radiator hose to the side of the fuse box housing as shown in the third picture. Replace the fuse box. Replace the fan and fan shroud with OEM hardware. Install the fan shroud brace (3) onto the bracket with bolt (7) and to the fan shroud using bolt (8) and the OEM nut. Reconnect the battery cables. Run vehicle and check for proper belt tracking.

CAUTION: Before starting the engine, check to make certain no wires, hoses, etc. that may have been disturbed during installation do not come in contact with any hot or moving parts. Properly refill any fluids that may have been drained. Check for leaks. Run the engine and check for proper belt tracking and clearance of any hoses, wires, etc. It is the installer's responsibility to correct/adjust any components, if necessary, before the vehicle is put into service.



PARTS LIST

- | | |
|----------------------------|---|
| 1. RMP6092V (1) | 14. 1255-0090 .500 Mod. Slide Bushing (2) |
| 2. DMB591 (1) | <u>POWER STEERING LINE SUPPORT</u> |
| 3. DMB592 (1) | 15. DMB593 (1) |
| 4. 8mm x 50mm Flange (3) | 16. 6mm x 12mm Flange (1) |
| 5. 8mm Flange Nut (4) | <u>HOSE SUPPORT KIT</u> |
| 6. 10mm x 20mm Flange (2) | 17. 6mm x 16mm Flange |
| 7. 8mm x 20mm Flange (2) | 18. 6mm Flange Nut (1) |
| 8. 8mm x 25mm Flange (2) | 19. #16 Wire Loom Clamp (1) |
| 9. DMB594 (1) | 20. 8mm x 20mm Short Head Flange (1) |
| 10. 89048 Idler (1) | 21. #32 Wire Loom Clamp (1) |
| 11. 3/8 Flat Washer (1) | 22. 5081305 Belt (1) |
| 12. 10mm x 45mm (1) | 23. RMB603LD (1) |
| 13. 10mm x 80mm Flange (2) | |





Power Steering Fitting (23) (For Lane Departure Trucks)