

**NOTE: ON 2008 AND NEWER 5.4 IT IS THE INSTALLERS RESPONSIBILITY TO PURCHASE NEW BALANCER WITH HOLES FROM FORD PART#7L3Z-6312-A**

## INSTALLATION NOTES

- 08 and newer Models:** Disconnect the negative battery cable. Remove the air duct. From underneath the vehicle release the tabs on the fan shroud and swing it forward. Protect the radiator with a piece of cardboard and remove the fan. Leave the fan inside the fan shroud. (Fan nut has right hand threads)

**05-07 Models:** Disconnect the negative battery cable. Drain the engine coolant. Remove the upper radiator hose and overflow hose from the radiator. Remove the air duct. On 5.4L engines, remove and discard the air duct brace. Remove the fan and fan shroud. (Fan nut has right hand threads.)
- Clean any dirt or rust from the damper then install the pulley drive adapter (1) onto the damper with bolts (2). Torque to 40 ft. lbs. Remove the nut and cable support from the stud at location "F". Bend or cut the cable support out of the way, then secure it with tie straps. Install the drive belt onto the pulley with the belt inside the legs at locations "E" and "F", and over the leg at location "G". Install the pulley assembly (3) onto the engine with lock washers (4), nuts (5), and bolt (6). Torque nuts and bolt to 30-35 ft. lbs.
- Remove the two nuts from the studs at locations "A" and "B". Remove the radio noise suppressors and torque the studs to 25 ft. lbs. **(IMPORTANT) Replace the radio noise suppressors back onto the studs. On 2011 model 6.8L engines use shim (29) and nut (28) at location B.** Remove the bolt from the idler at location "C". **Do not remove the idler.** If the heater hose at location "H" comes in contact with the bracket, cut off as indicated in the illustration. Expand the steel band holding the check valve. Push the check valve past the 90° bend recrimp the steel band to secure the check valve. Reconnect the heater hose. The heater hose should now turn back toward the cab instead of up and then back. Re-route the wires that run across the front of the passenger side valve cover to allow the bracket to be installed without pinching any of the wires. Install the main bracket onto the engine with the O.E.M. nuts at location "A" and "B", lock washer (13) with bolt (14) at location "D", and lock washer (13) with bolt (15) at location "C". Torque nuts and bolts to 25 ft. lbs.
- Install idler (17) with bushing (16), lock washer (18), and bolt (19) onto the main bracket. Torque the bolt to 35-40 ft. lbs. Install the clutch pump with bolts provided in the kit. Align it with the drive pulley, and then secure it properly. Attach Idler (22) to tensioner arm (20) using bolt (23). Install the tensioner assembly with lock washer (18) and bolt (21). Install the drive belt according to the belt diagram. Tension belts properly, then torque bolt (21) to 35 ft. lbs. Install the appropriate fan spacer nut.
- 08 and newer Models:** Replace the fan and remove the protective cardboard if used. From underneath pull the fan shroud back until it snaps into place. Remove the resonator from the air duct as shown in the illustration and seal it with the rubber grommet and plug included in the kit. Connect the battery cable.

**05-07 Models:** Replace the fan and fan shroud. Install the radiator hose and overflow hose. Replace the air duct. On 5.4L engines, the resonator will need to be cut from the main air duct tube to gain belt clearance. Connect the battery cable and replace the engine coolant.
- Make certain any wires that were disturbed during installation do not come in contact with any hot or moving parts. Run the engine and check for proper belt tracking. Adjust if necessary.

**NOTE: On trucks equipped with push button 4 wheel drive, an additional bracket kit is required to relocate the vacuum canister. Part # FMB474A**

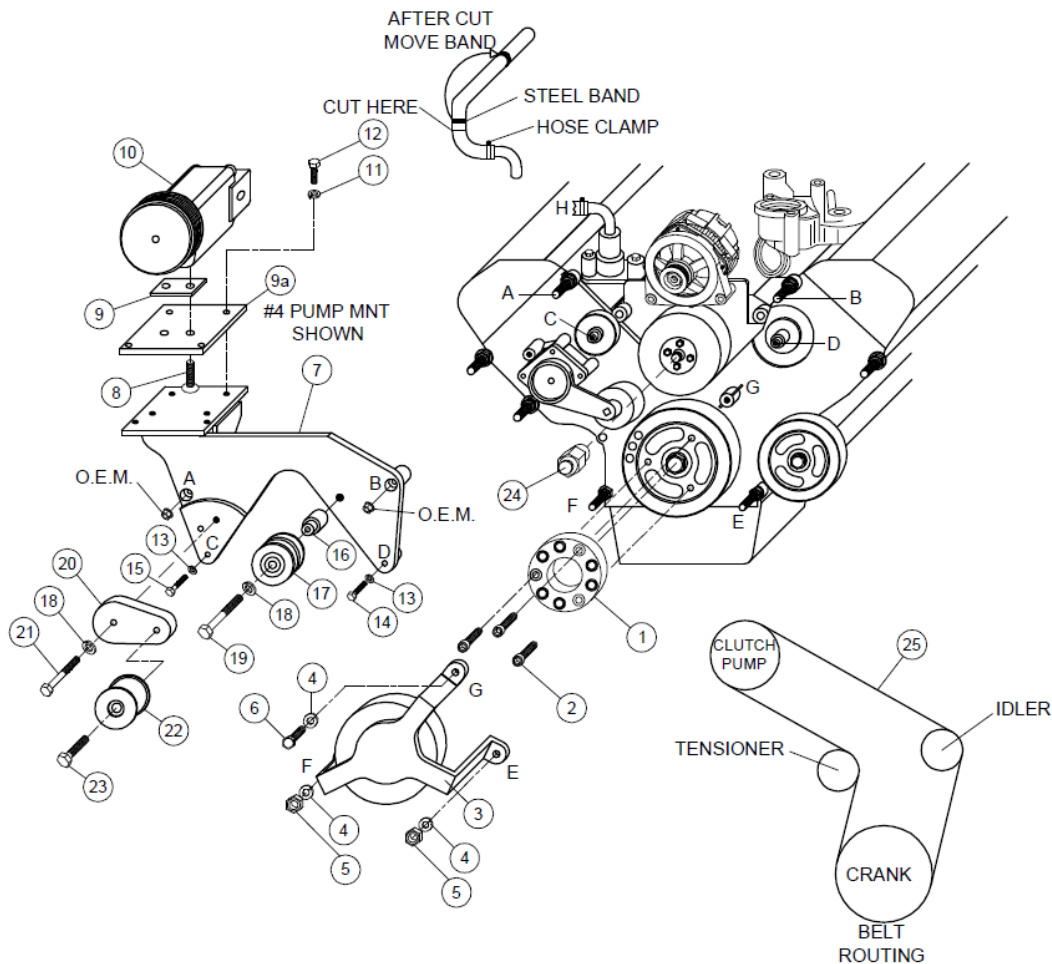
## FMK 47-2SB

Ford F-250-550

2005-2010 5.4L Triton 3-Valve

2005-2016 6.8L Triton 3-Valve

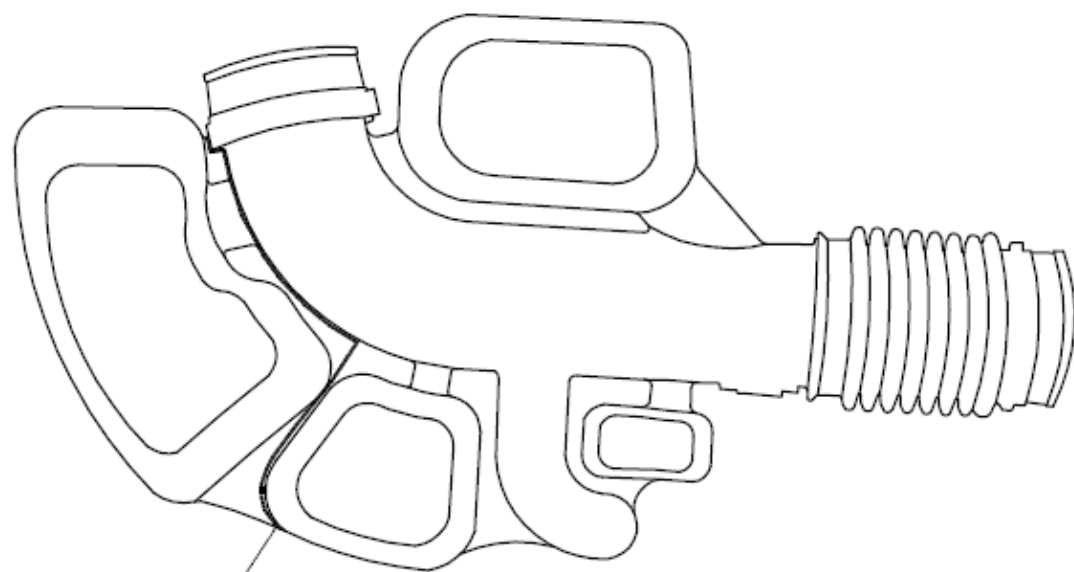
W-W/O AC, W/Bearing Support



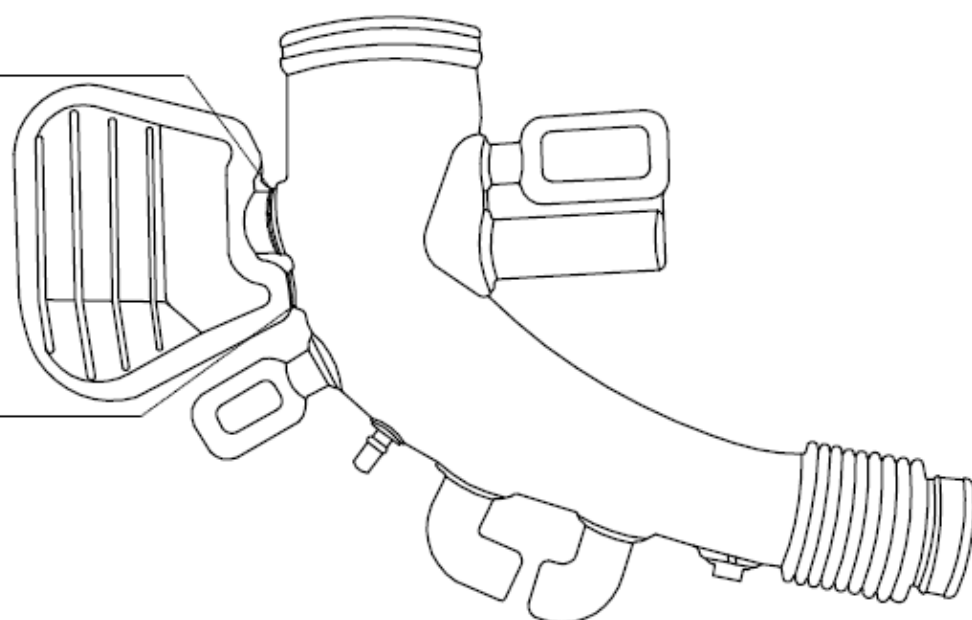
## PARTS LIST

### FPC 452A INCLUDES ITEMS (1-6)

- |   |  |
|---|--|
| 1. FPA 45 (1)                                       | 17. GPCD (1)   |
| 2. 10mm x 25mm SHCS (3)                             | 18. 12mm LW (2)  |
| 3. FPC452 Assembly (1)                              | 19. 12mm x 75mm 10.9 Bolt (1)                                |
| 4. 10mm LW (3)                                      | 20. FMB472L Tensioner (1)                                    |
| 5. 10mm Nut (2)                                     | 21. 12mm x 35mm 10.9 Bolt (1)                                |
| 6. 10mm x 40mm 10.9 Bolt (1)                        | 22. IPCD Idler (1)   |
| 7. FMB47 (0,2,4) (1)                                | 23. 5/8-11 x 1-3/4 Bolt (1) <i>Left Hand Thread</i>          |
| 8. 1/2-13 x 1-3/4 FHCS (used on #4 only) (2)        | W/17mm Shoulder  |
| 9. 1006644 Mount Spacer (used on #4 only) (1)       | 24. FSK37R (used on 5.4L only) (1)                           |
| 9a. FMP474 (used on #4 only) (1)                    | FSK6.8B (used on 6.8L only) (1)                              |
| 10. Clutch Pump Assembly ( <i>Sold Separately</i> ) | 25. A70F Kevlar Belt ( <i>A72F with 7" Clutch only</i> ) (2) |
| 11. 3/8 LW (4)                                      | 26. Aluminum Plug 1012646 (5.4L)                             |
| 12. 3/8-16 x 1 Bolt (4)                             | 1012647 (6.8L)   |
| 13. 8mm LW (2)                                      | 27. Rubber Grommet 1013038 (5.4L)                            |
| 14. 8mm x 35mm 10.9 Bolt (1)                        | 1007870 (6.8L)   |
| 15. 8mm x 45mm 10.9 Bolt (1)                        | 28. 8mm Flange Nut (1)                                       |
| 16. FMB 473 (1)                                     | 29. .040" x 8mm Shim Washer                                  |

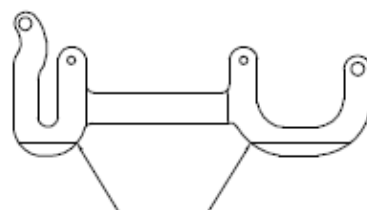


5.4L TRITON  
CUT HERE



6.8L TRITON  
CUT HERE

6.8L TRITON  
CUT HERE



CUT ALONG LINE.  
APPROX. 1/2"