



CW MILL EQUIPMENT CO., INC.
P.O. Box 246 • Sabetha, Kansas 66534
(785) 284-3454 • FAX (785) 284-3601

FMK 47SD508-8

2005-10 Ford F-250-550
5.4L, 6.8L, Triton 3-Valve
2011-2016 6.8L Engines
W-W/O AC
W/O Bearing Support

INSTALLATION NOTES

1. Disconnect the negative battery cable. Drain the engine coolant. Remove the upper radiator hose and overflow hose from the radiator. Remove the air duct. On 5.4L engines, remove and discard the air duct brace. Remove the fan and fan shroud. (Fan nut has right hand thread.)
2. Clean any dirt or rust from the damper then install the drive pulley (1) onto the damper with bolts (2) & lockwasher (3). Torque to 40 ft. lbs.
3. Remove the two nuts from the studs at locations "A" and "B". Remove the radio noise suppressors and torque the studs to 25 ft. lbs. **(IMPORTANT) Replace the radio noise suppressors back onto the studs.** Remove the bolt from the idler at location "C". If the heater hose at location "H" comes in contact with the bracket, cut off as indicated in the illustration. Expand the steel band holding the check valve. Push the check valve past the 90° bend and crimp the steel band back on the hose to secure the check valve. Reconnect the heater hose. The heater hose should now turn back toward the cab instead of up and then back. Re-route the wires that run across the front of the passenger side valve cover to allow the bracket to be installed without pinching any of the wires. Install the main bracket onto the engine with the O.E.M. nuts at location "A" and "B", lockwasher (12) with bolt (11) at location "D", and lockwasher (12) with bolt (13) at location "C". Torque nuts and bolts to 25 ft. lbs.
4. Install idler (7) with bushing (10), flatwasher (8), and bolt (9) onto the main bracket. Torque the bolt to 35-40 ft. lbs. Install the auxiliary A.C. with bolts (14,17), nuts (15) and slide bushings (16). Install the tensioner (5) with bolt (6). Torque to 25 ft. lbs. Install the drive belt (19) according to the belt diagram. Install the appropriate fan spacer nut.
5. Replace the fan and fan shroud. Install the radiator hose and overflow hose. Replace the air duct. The resonator on the air intake will need to be cut off and plugged. Refer to the diagram in these instructions. Connect the battery cable and replace the engine coolant. Make certain any wires that were disturbed during installation do not come in contact with any hot or moving parts. Run the engine and check for proper belt tracking. Adjust if necessary.

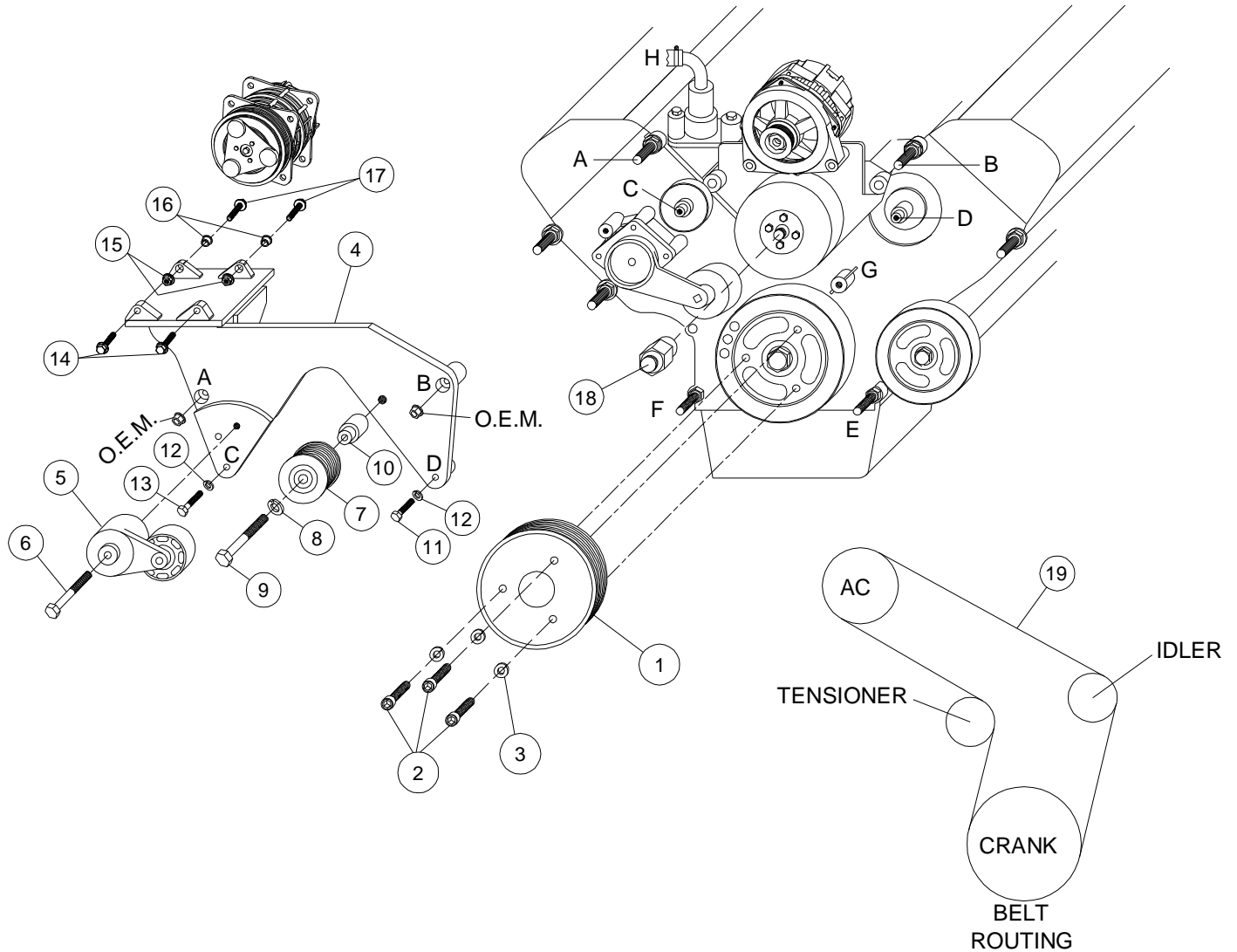
FMK 47SD508-8

2005-10 Ford F-250-550

5.4L, 6.8L, Triton 3-Valve

2011-2016 6.8L Engines

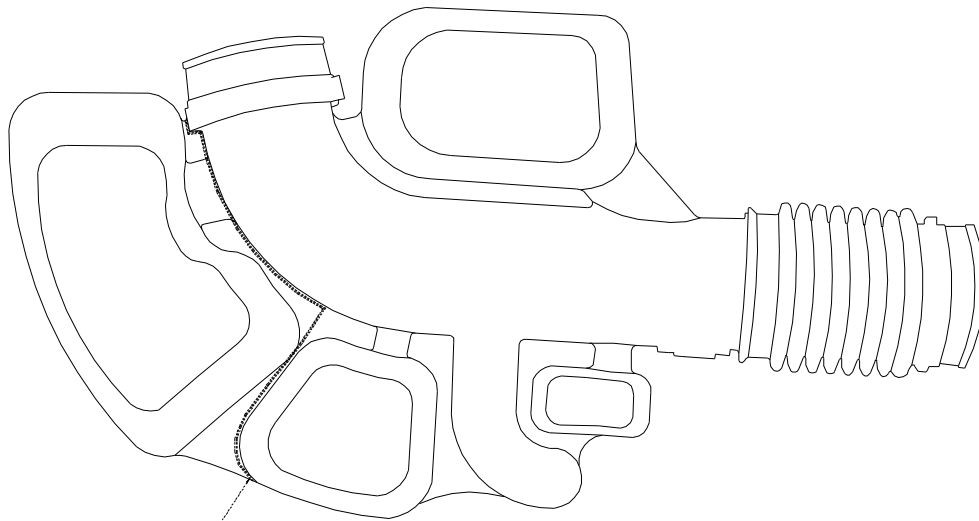
W-W/O AC, W/O Bearing Support



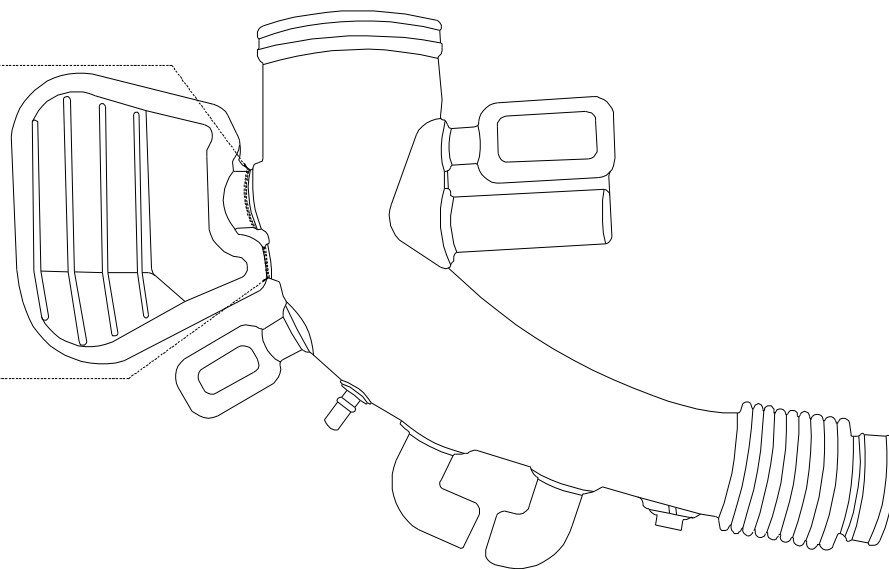
PARTS LIST

- | | |
|--------------------|----------------------------|
| 1. FPC368 (1) | 11. 8mm x 35mm (1) |
| 2. 10mm x 55mm (3) | 12. 8mm LW (2) |
| 3. 10mm LW (3) | 13. 8mm X 45mm (1) |
| 4. FMP47SD508 (1) | 14. 10mm x 30mm Flange (2) |
| 5. 89200B (1) | 15. 10mm Flange Nut (2) |
| 6. 10mm x 80mm (1) | 16. 1255-0090 (2) |
| 7. GPCD8 (1) | 17. 10mm x 40mm Flange (2) |
| 8. 12mm FW (1) | 18. FSK37R, FSK6.8A (1) |
| 9. 12mm x 75mm (1) | 19. 5080715 Dayco (1) |
| 10. FMB473-8 (1) | |

MODIFICATIONS SHEET

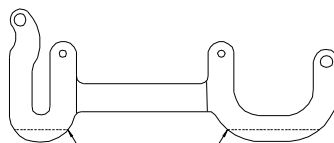


5.4L TRITON
CUT HERE



6.8L TRITON
CUT HERE

**2009 AND NEWER
MODIFICATION ONLY**



CUT ALONG LINE.
APPROX. 1/2"