

INSTALLATION NOTES

1. The buyer is responsible for providing trained and experienced installation decision making with technical know-how to apply professional judgment that specifically applies to each individual installation.
2. Be sure to read and understand all available information including but not limited to instructions, warnings, sale terms, and warranties for the vehicle and all system components prior to attempting installation.
3. Disconnect negative battery cable. Drain coolant low enough for top radiator hose removal. Remove air cleaner assembly. Remove air resonator and discard. Install 2" aluminum plug (9) in its place.
4. Remove upper radiator hose. Remove serpentine belt. Remove oil fill tube. Cut tube bracket as shown. Remove power steering pump. The bolts can be discarded. Remove power steering pump OEM bracket. Cut approximately 4-1/2" off hose from power steering reservoir to pump and reinstall. Remove wire harness bracket. The bracket may be discarded.
5. Remove emission tube from valve cover to intake. Install emission hose assembly (11-14). Small hose (11) will be installed at the intake.
6. Install main bracket (1) with mounting hardware (2-3) at locations [A,B]. Install OEM power steering pump with mounting hardware (4). Install oil fill tube to main bracket (1) with hardware (14-15). Install auxiliary A/C compressor with mounting hardware (26-27). Install smooth idler pulley assembly (5-8) to main bracket (1). Install belt (28) – While tensioner is held. Push the smooth idler pulley assembly down and tighten.
7. Install upper radiator hose assembly (16-24). Cut approximately 5" off small bypass hose and reinstall using zip ties (25). Secure to radiator hose and away from any hot or moving parts. Trim any excess zip tie.
8. Install air cleaner assembly. Refill power steering fluid. Refill radiator.

CAUTION: Before starting the engine, check to make certain no wires, hoses, etc. that may have been disturbed during installation do not come in contact with any hot or moving parts. Properly refill any fluids that may have been drained. Check the engine for leaks. Run the engine and check for proper belt tracking and clearance of any hoses, wires, etc. It is the installer's responsibility to correct/adjust, if necessary, before the vehicle is put into service.

CW Mill Equipment Co., Inc. Mounting Kit and Mounting Kit Component Disclaimer: (1.) Due to the custom nature and variation of all add-on systems of this type, no complete system kits are offered by the manufacturer, and any group of parts marketed as a kit is limited to only the individually defined parts in that specific kit. The system designer's rotating accessory components are not included, offered, or fully known by the manufacturer. In addition to the absence of the rotating accessory system, other potential components such as additional clamps, brackets, wear liners, hardware, or other items that may be required by the system designer must be identified and supplied by the actual system designer. (2.) Due to vehicle manufacturer's assembly tolerances, production changes, and installation variances, it is the buyer's responsibility to ensure adequate clearance for all components including space for and safe location of the fan, radiator, all lines, and wires. Check for possible movement, vibration, friction points, heat exposure and/or shifting of any and all components such as hoses, wires, and all other components including those that may otherwise be considered non-moving and/or unaffected by the installation (3.) The buyer is responsible for the entire installation of a mounting kit as the mounting kit is part of a custom process controlled by the buyer through their whole system design and directed installer as the installer evaluates, locates, routes, aligns, and tightens all components while determining if additional clamps, brackets, wear-liners, or other components may be required, beyond those included in the kit. Any additional items required, beyond those included in the kit, are to be provided at the expense of the buyer. (4.) The buyer is responsible for the development and communication of their whole system installation procedures, safety precautions, application, and use of the engine accessory mounting kit in their system, including efforts to maintain vehicle control and prevent pinch, wear, impact, and/or burn exposure on all hoses, wires, and other parts. (5.) The buyer is responsible for providing trained and experienced installation decision making with technical know-how to apply professional judgment that specifically applies to each individual installation. The buyers chosen installers must be qualified and experienced technicians that are familiar with the vehicle and accessory being mounted as well as the buyer's whole system design and installation procedures associated with the kit. (6.) The buyer is responsible for determining and achieving compliance to all regulatory issues that apply to the use of all products. (7.) The manufacturer reserves the right to make changes and/or improvements to any product at any time with or without notice.

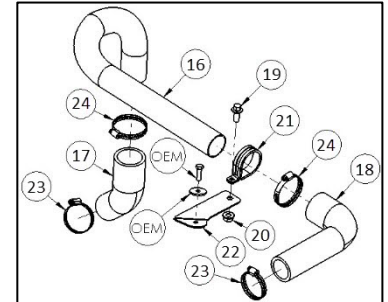
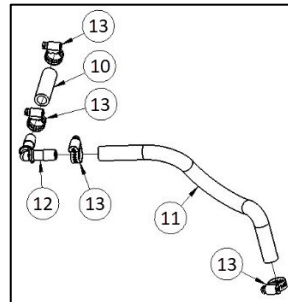
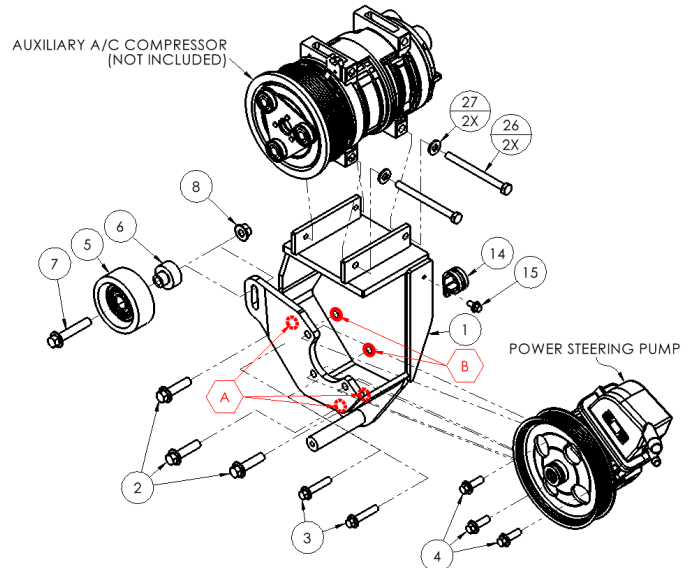
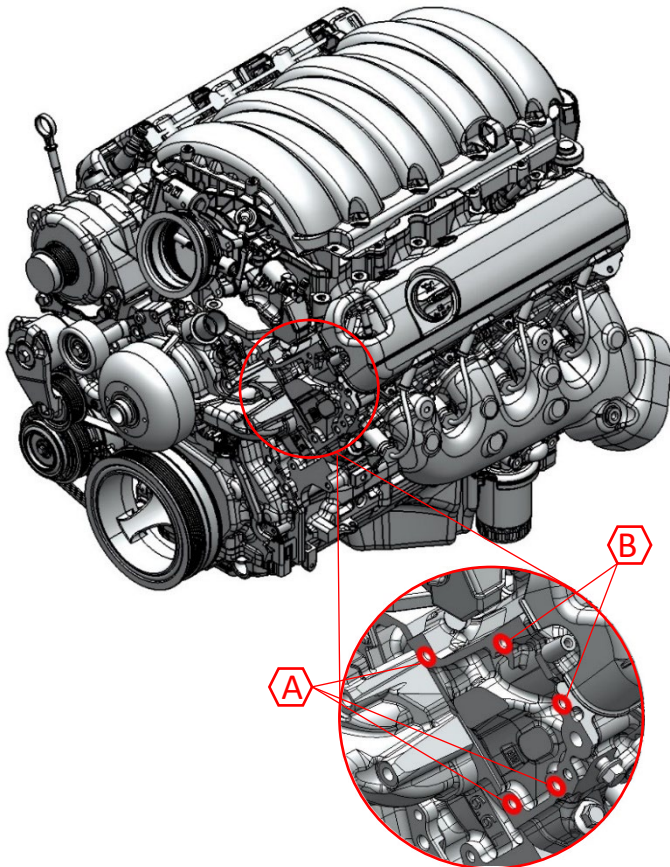


CW Mill Equipment Co., Inc.
 14 Commerce Drive Sabetha, KS 66534
 Phone: (785) 284-3454
 Fax: (785) 284-3601
 Email: brackets@cwmill.com
 Website: www.cwkits.com

VCK41TM21-I6

2021-2025 Chevrolet Express 2500-3500 Van, 3500-4500 Cutaway
 2021-2025 GMC Savana 2500-3500 Van, 3500-4500 Cutaway
 6.6L V8 Gas w/ A/C, w/o OEM Dual Alternators

Requires 8-Groove, 127mm Diameter Clutch
 For use w/ TM21 Direct-Mount Compressor
 150% Overdrive Ratio w/ 127mm Diameter Clutch



PARTS LIST

Item	Part Number	Description	Qty.	Item	Part Number	Description	Qty.
Main Bracket				Upper Radiator Hose Assembly			
1	VCMB41TM21-I6	Main Bracket	1	16	VCMB414	Custom Steel Pipe	1
Main Bracket Mounting Hardware				17	VCMB411	45° Rubber Hose Line	1
2	1006933	M10-1.5 x 40mm 10.9Gr Hex Flg. Bolt	3	18	VCMB412	90° Rubber Hose Line	1
3	1018223	M8-1.25 x 40mm 10.9Gr Hex Flg. Bolt	2	19	1013329	M8-1.25 x 20mm 10.9Gr Hex Flg. Bolt	1
OEM Power Steering Pump Mounting Hardware				20	1013333	M8-1.25 10.9Gr Hex Flg. Nut	1
4	1011887	M8-1.25 x 25mm 10.9Gr Hex Flg. Bolt	3	21	1007886	#24 Adel Clamp	1
Smooth Idler Pulley Assembly				22	VCMB415	Upper Radiator Hose Bracket	1
5	89007	Dayco Smooth Idler Pulley	1	23	1009294	#20 Hose Clamp	2
6	VCMB413	Machined Idler Bushing	1	24	1016325	#24 Hose Clamp	2
7	1018225	M10-1.5 x 55mm 10.9Gr Hex Flg. Bolt	1	Bypass Hose Zip Ties (Not Shown)			
8	1018204	M10-1.5 10.9Gr Hex Flg. Nut	1	25	1005417	Zip Tie	2
Air Resonator Plug (Not Shown)				Auxiliary A/C Compressor Mounting Hardware			
9	CMB263AP	2" Aluminum Plug	1	26	1011957	M8-1.25 x 100mm 10.9Gr Hex Bolt	2
Emmissions Hose Assembly (Items 11-13 are Assembled)				27	1010202	M8 Flat Washer	2
10	1018234	3/8" Hose	1.75"	Belt (Only One Belt is Supplied)			
11	1018234	3/8" Hose	10.25"	28	5060975	Dayco 6-Groove 97.5" Belt	1
12	1022518	3/8" 90° Plastic Elbow	1		K060975	Gates 6-Groove 97.5" Belt	1
13	1016347	#4 Hose Clamps	4		6PK2475	Bando 6-Groove 2475mm Belt	1
Oil Fill Tube Clamp Assembly							
14	1016340	M6-1.0 x 12mm 10.9Gr Hex Flg. Bolt	1				
15	1005111	#14 Adel Clamp	1				



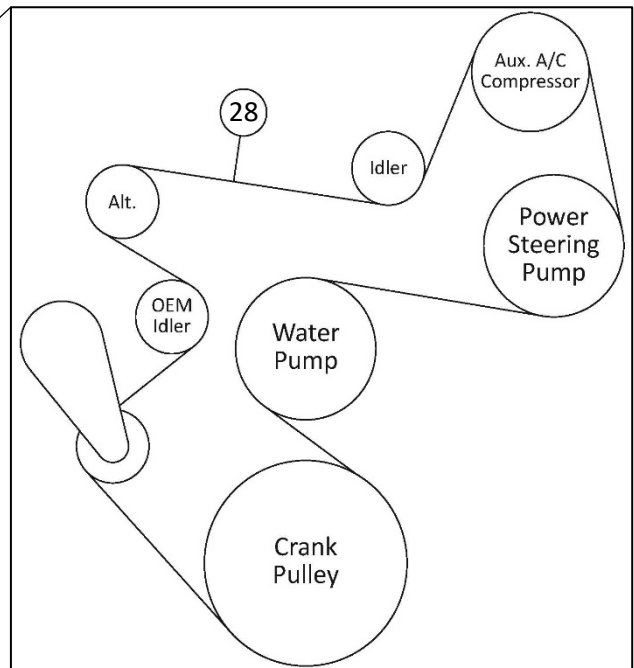
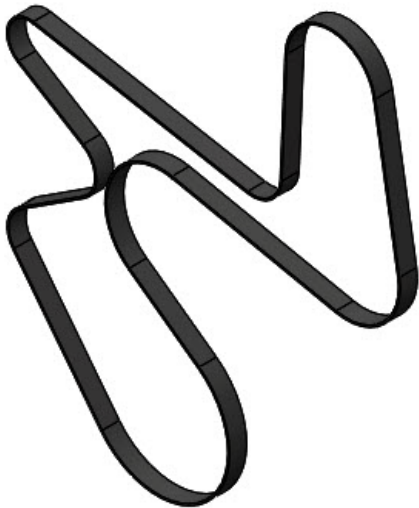
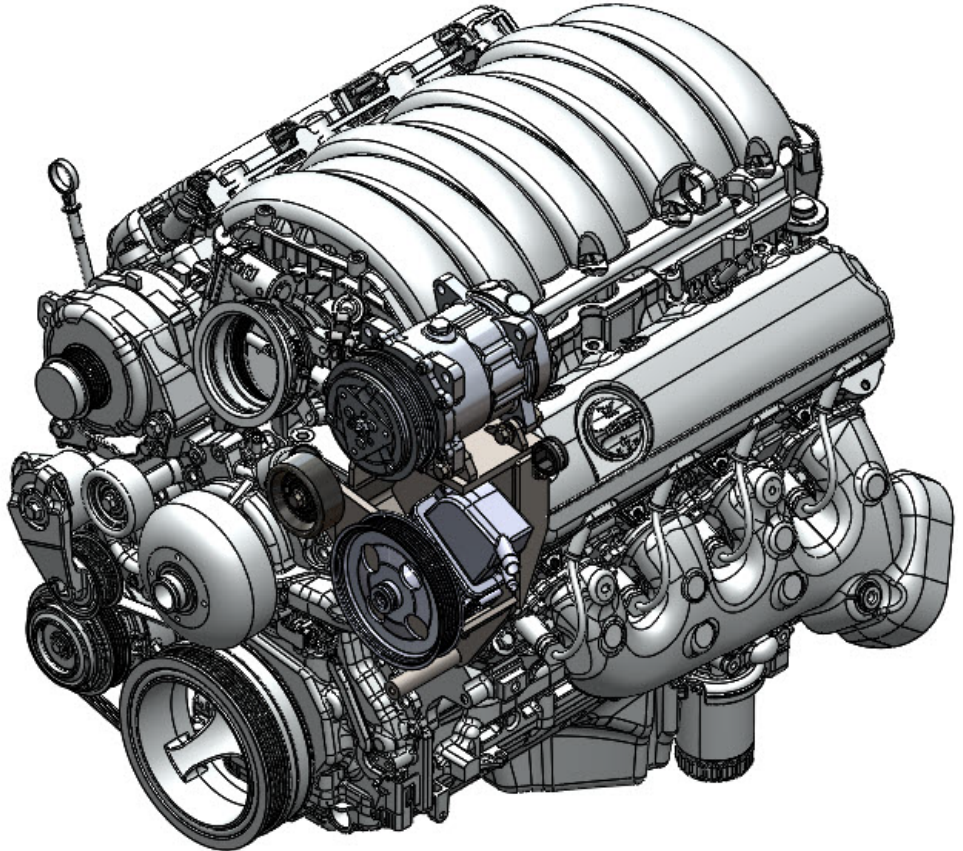
CW Mill Equipment Co., Inc.
14 Commerce Drive Sabetha, KS 66534
Phone: (785) 284-3454
Fax: (785) 284-3601
Email: brackets@cwmill.com
Website: www.cwkits.com

VCK41TM21-I6

2021-2025 Chevrolet Express 2500-3500 Van, 3500-4500 Cutaway
2021-2025 GMC Savana 2500-3500 Van, 3500-4500 Cutaway
6.6L V8 Gas w/ A/C, w/o OEM Dual Alternators

Requires 8-Groove, 127mm Diameter Clutch
For use w/ TM21 Direct-Mount Compressor
150% Overdrive Ratio w/ 127mm Diameter Clutch

Belt Routing



Belt Routing (28)

VCK41TM21-I6

2021-2025 Chevrolet Express 2500-3500 Van, 3500-4500 Cutaway
2021-2025 GMC Savana 2500-3500 Van, 3500-4500 Cutaway
6.6L V8 Gas w/ A/C, w/o OEM Dual Alternators

Requires 8-Groove, 127mm Diameter Clutch
For use w/ TM21 Direct-Mount Compressor
150% Overdrive Ratio w/ 127mm Diameter Clutch

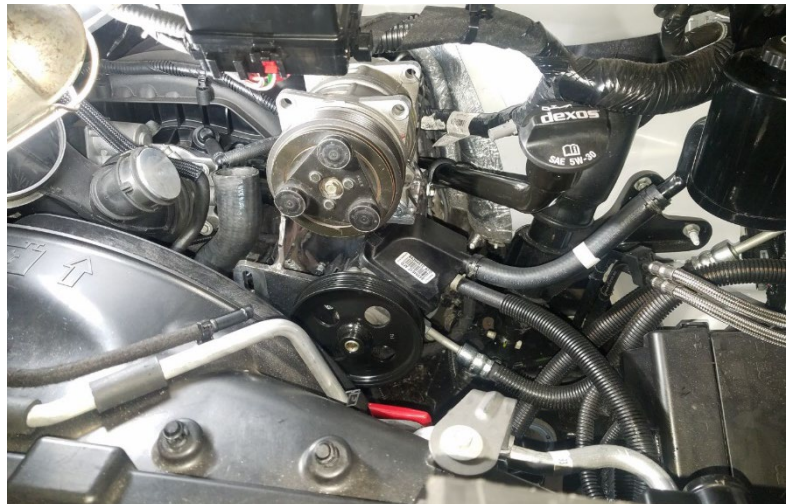
Instruction Photos



Oil Tube Bracket (Cut at Red Dotted Line)



Bypass Hose (Cut at Red Dotted Line)



Kit Assembly